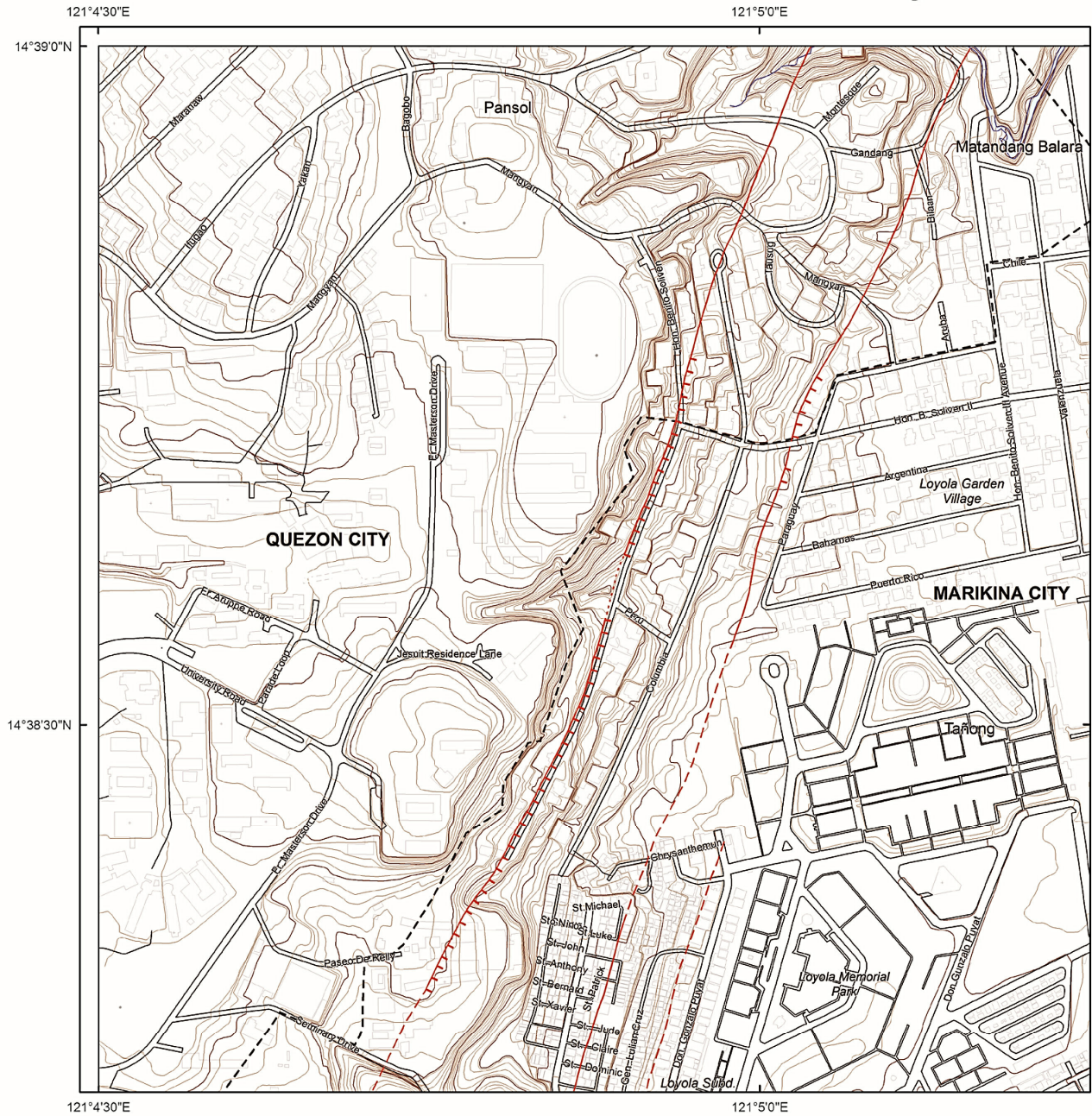


# West Valley Fault in



**Active Faults**

- Solid line - trace is certain; hachures indicate downthrown area
- - - Dashed line - trace is approximate
- · · Dotted line - trace is concealed

**Explanation**

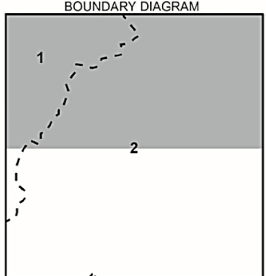
The Valley Fault System, consisting of the West Valley Fault and the East Valley Fault, was mapped by the Philippine Institute of Volcanology and Seismology using available data, such as aerial photographs, satellite imageries, topographic maps, earthquake epicenters and previous publications, and verified by field surveys. Some geomorphic features identified from aerial photographs may not be observable on the ground at present due to land modification. The recommended minimum buffer zone, or zone of avoidance, against ground rupture hazard is at least 5 meters as reckoned from both sides of the fault trace or from the edge of the deformation zone.

Base map are National Mapping and Resource Information Authority 1:5,000 planimetric maps (2004) and Metro Manila Street Map (2010).

**Legend**

- Roads
- Contour lines
- Administrative boundaries
- Building footprints
- Major roads
- Water bodies

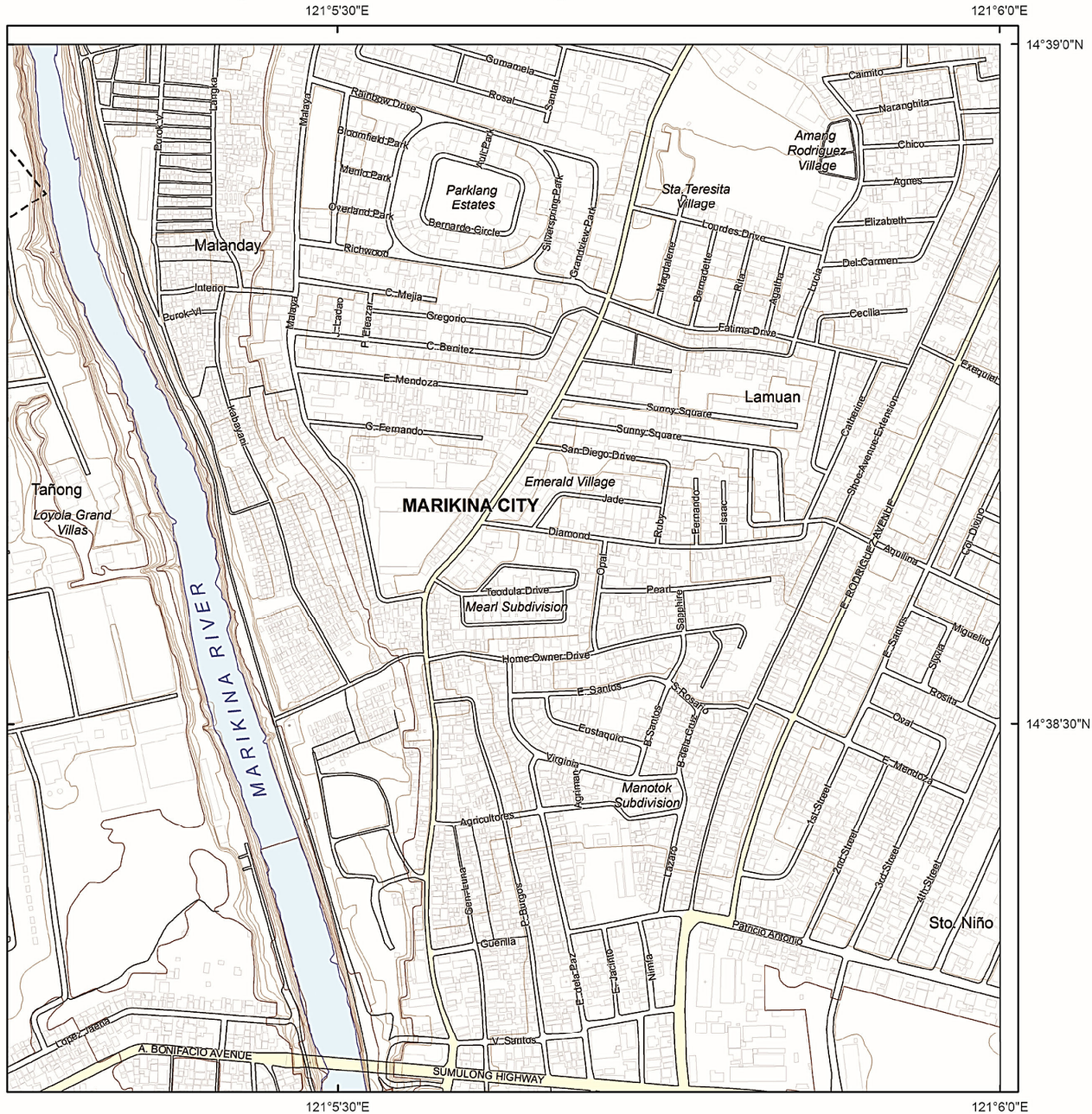
Disclaimer:  
Administrative boundaries are approximate  
(Risk Analysis Project, 2013).



City / Municipality  
1. Quezon City  
2. Marikina City



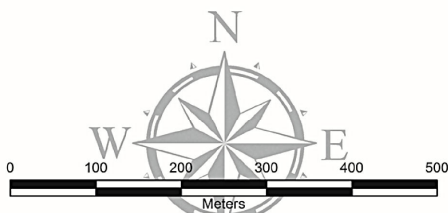
# Marikina City and Quezon City



INDEX TO ADJOINING SHEETS

3230 III 7 B	3230 III 7 C	3230 III 8 B
3230 III 12 A	3230 III 12 D	3230 III 13 A
3230 III 12 B	3230 III 12 C	3230 III 13 B

Shaded portion pertains to areas covered by the maps shown in these pages



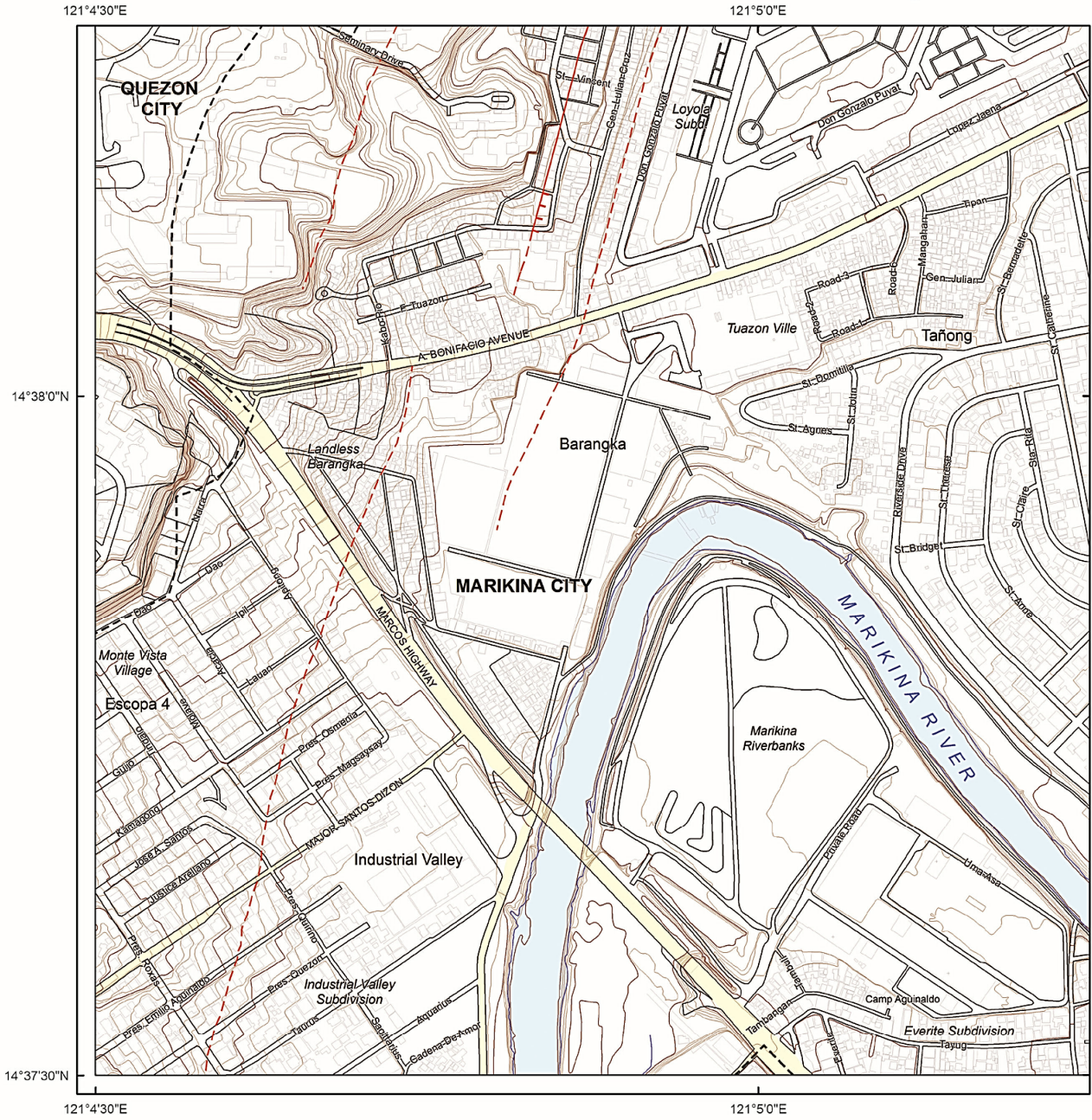
Spheroid..... Clarke 1886  
 Projection..... Transverse Mercator  
 Horizontal Datum..... Philippine Reference System 1992 (PRS92)  
 Vertical Datum..... Mean Sea Level  
 Contour Interval..... 1 meter



Department of Science and Technology  
**PHILIPPINE INSTITUTE OF VOLCANOLOGY AND SEISMOLOGY**  
 PHIVOLCS Building, C.P. Garcia Avenue  
 U.P. Campus, Diliman, Quezon City  
 Tel. No. : +63 2 426-1466 to 79 Telefax: +63 2 929-8366  
 June 2014



# West Valley Fault in



**Active Faults**

- Solid line - trace is certain; hachures indicate downthrown area
- - - Dashed line - trace is approximate
- · · Dotted line - trace is concealed

**Explanation**

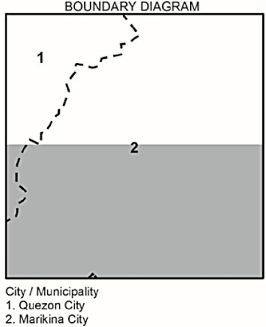
The Valley Fault System, consisting of the West Valley Fault and the East Valley Fault, was mapped by the Philippine Institute of Volcanology and Seismology using available data, such as aerial photographs, satellite imageries, topographic maps, earthquake epicenters and previous publications, and verified by field surveys. Some geomorphic features identified from aerial photographs may not be observable on the ground at present due to land modification. The recommended minimum buffer zone, or zone of avoidance, against ground rupture hazard is at least 5 meters as reckoned from both sides of the fault trace or from the edge of the deformation zone.

Base map are National Mapping and Resource Information Authority 1:5,000 planimetric maps (2004) and Metro Manila Street Map (2010).

**Legend**

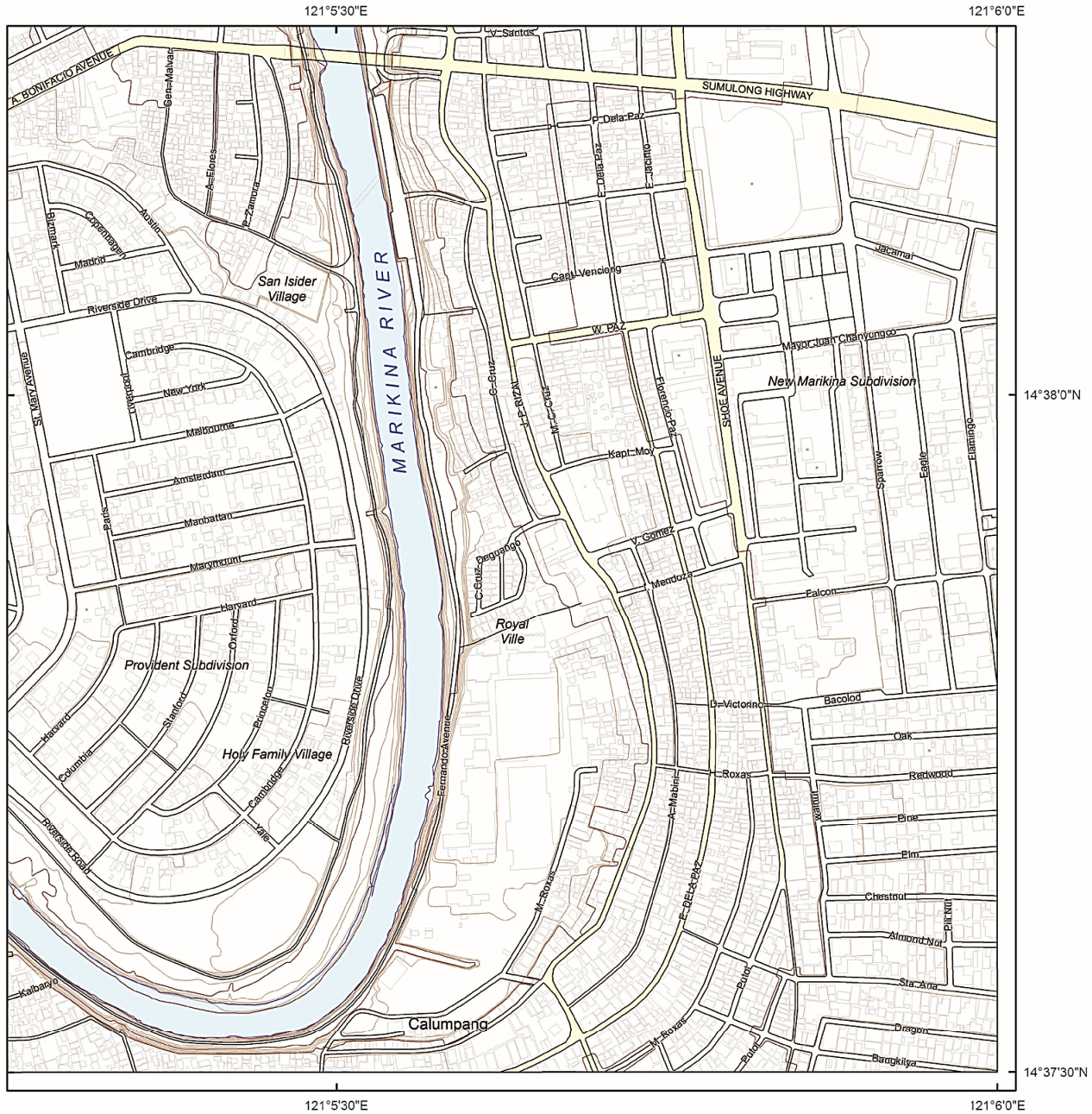
- Roads
- Contour lines
- Administrative boundaries
- Building footprints
- Major roads
- Water bodies

Disclaimer:  
Administrative boundaries are approximate  
(Risk Analysis Project, 2013).





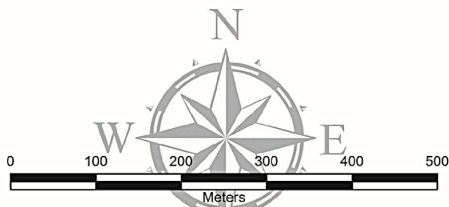
# Marikina City and Quezon City



INDEX TO ADJOINING SHEETS

3230 III 7 B	3230 III 7 C	3230 III 8 B
3230 III 12 A	3230 III 12 D	3230 III 13 A
3230 III 12 B	3230 III 12 C	3230 III 13 B

Shaded portion pertains to areas covered by the maps shown in these pages



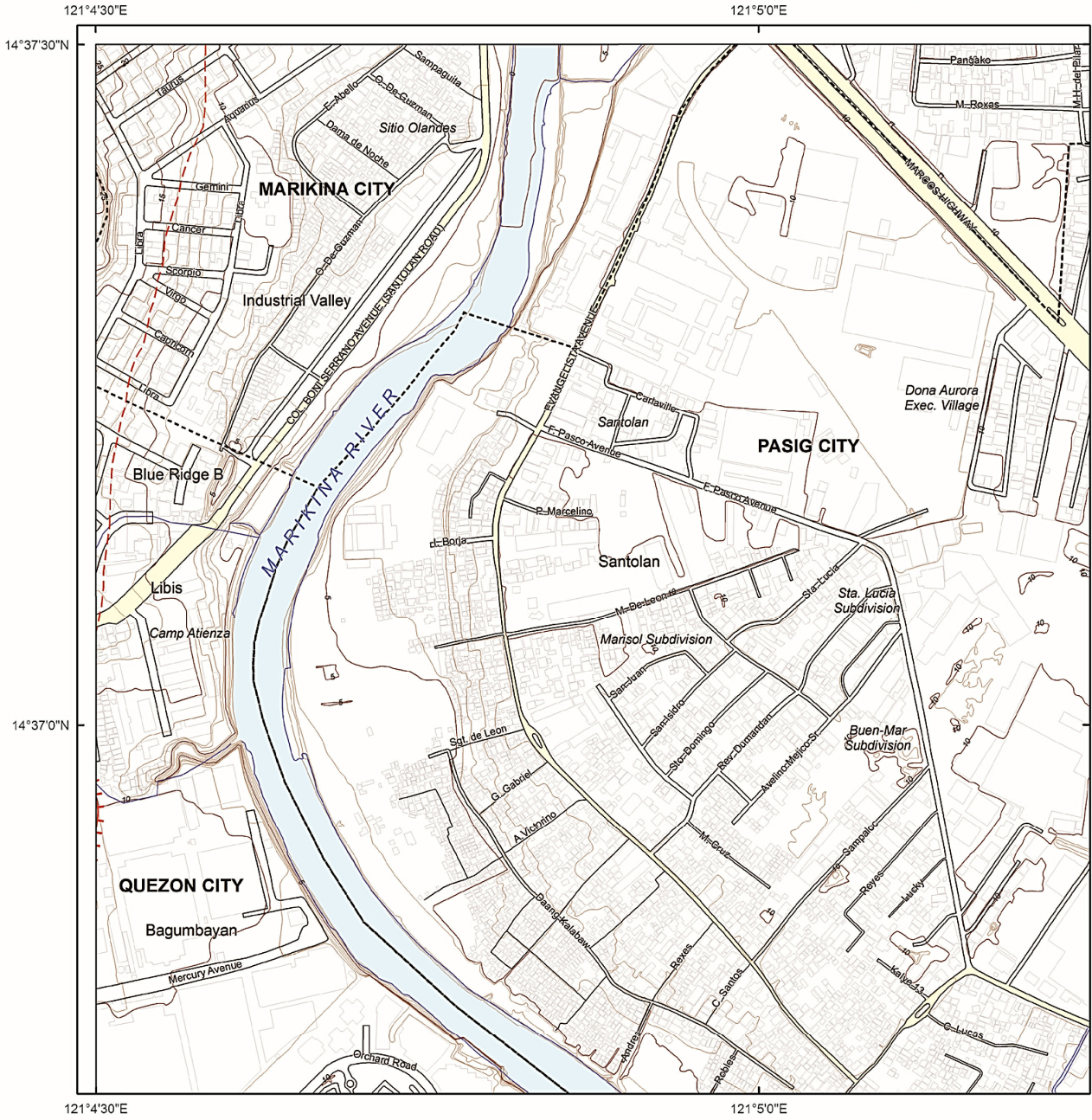
Spheroid..... Clarke 1866  
 Projection..... Transverse Mercator  
 Horizontal Datum..... Philippine Reference System 1992 (PRS92)  
 Vertical Datum..... Mean Sea Level  
 Contour Interval..... 1 meter



Department of Science and Technology  
**PHILIPPINE INSTITUTE OF VOLCANOLOGY AND SEISMOLOGY**  
 PHIVOLCS Building, C.P. Garcia Avenue  
 U.P. Campus, Diliman, Quezon City  
 Tel. No. : +63 2 426-1468 to 79 Telefax: +63 2 929-8366  
 June 2014



# West Valley Fault in



**Active Faults**

- Solid line - trace is certain; hachures indicate downthrown area
- - - Dashed line - trace is approximate
- · · Dotted line - trace is concealed

**Explanation**

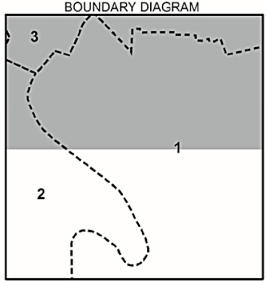
The Valley Fault System, consisting of the West Valley Fault and the East Valley Fault, was mapped by the Philippine Institute of Volcanology and Seismology using available data, such as aerial photographs, satellite imageries, topographic maps, earthquake epicenters and previous publications, and verified by field surveys. Some geomorphic features identified from aerial photographs may not be observable on the ground at present due to land modification. The recommended minimum buffer zone, or zone of avoidance, against ground rupture hazard is at least 5 meters as reckoned from both sides of the fault trace or from the edge of the deformation zone.

Base map are National Mapping and Resource Information Authority 1:5,000 planimetric maps (2004) and Metro Manila Street Map (2010).

**Legend**

- Roads
- Contour lines
- - - Administrative boundaries
- Building footprints
- Major roads
- Water bodies

Disclaimer:  
Administrative boundaries are approximate  
(Risk Analysis Project, 2013).



City / Municipality  
 1. Pasig City  
 2. Quezon City  
 3. Marikina City



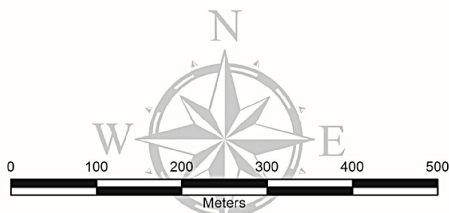
# Marikina City and Quezon City



INDEX TO ADJOINING SHEETS

3230 III 12 A	3230 III 12 D	3230 III 13 A
3230 III 12 B	3230 III 12 C	3230 III 13 B
3230 III 17 A	3230 III 17 D	3230 III 18 A

Shaded portion pertains to areas covered by the maps shown in these pages



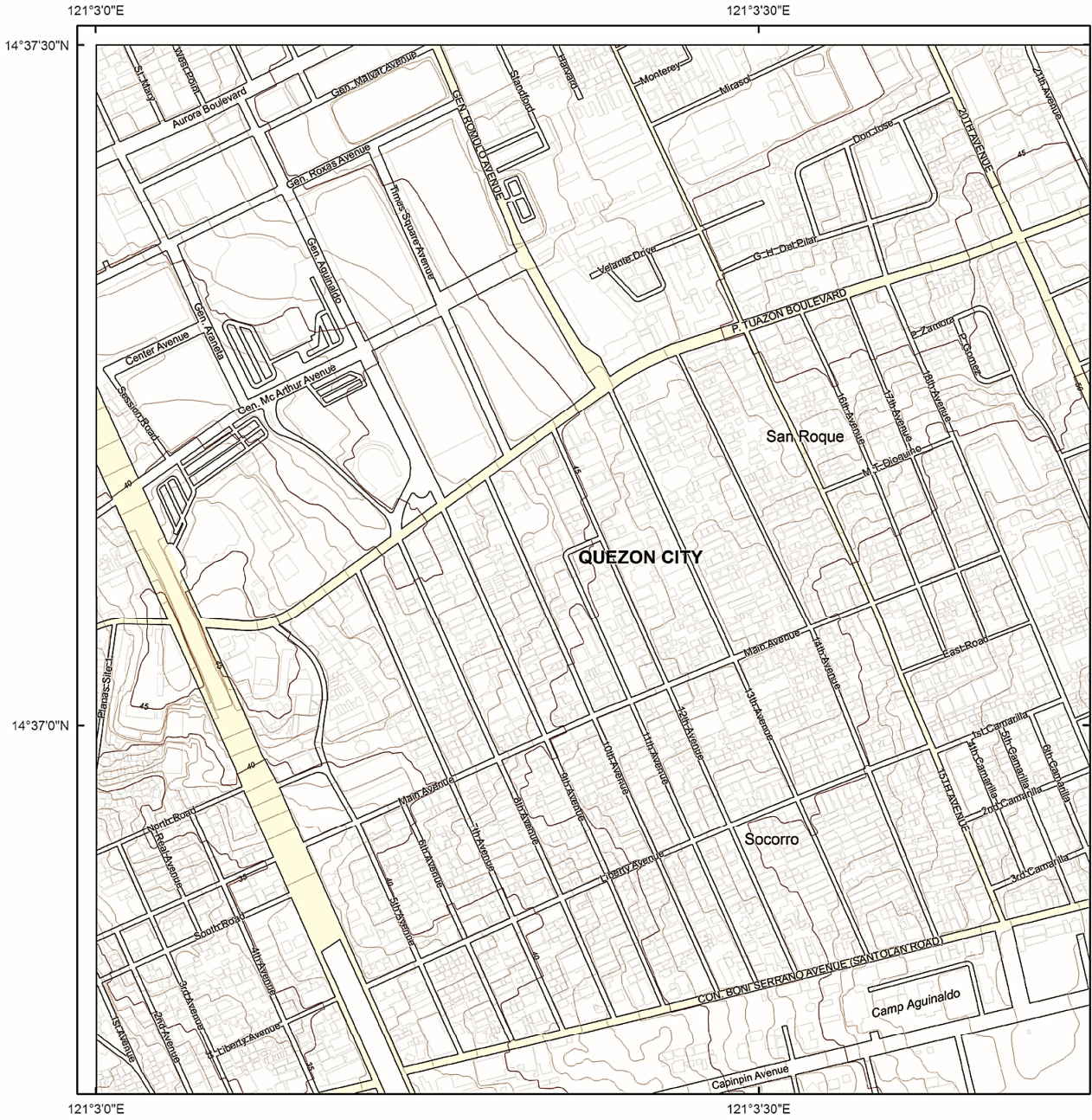
Spheroid..... Clarke 1866  
 Projection..... Transverse Mercator  
 Horizontal Datum..... Philippine Reference System 1992 (PRS92)  
 Vertical Datum..... Mean Sea Level  
 Contour Interval..... 1 meter



Department of Science and Technology  
**PHILIPPINE INSTITUTE OF VOLCANOLOGY AND SEISMOLOGY**  
 PHIVOLCS Building, C.P. Garcia Avenue  
 U.P. Campus, Diliman, Quezon City  
 Tel. No. : +63 2 426-1468 to 79 Telefax: +63 2 929-8366  
 June 2014



# West Valley Fault



**Active Faults**

- Solid line - trace is certain; hachures indicate downthrown area
- Dashed line - trace is approximate
- Dotted line - trace is concealed

**Explanation**

The Valley Fault System, consisting of the West Valley Fault and the East Valley Fault, was mapped by the Philippine Institute of Volcanology and Seismology using available data, such as aerial photographs, satellite imageries, topographic maps, earthquake epicenters and previous publications, and verified by field surveys. Some geomorphic features identified from aerial photographs may not be observable on the ground at present due to land modification. The recommended minimum buffer zone, or zone of avoidance, against ground rupture hazard is at least 5 meters as reckoned from both sides of the fault trace or from the edge of the deformation zone.

Base map are National Mapping and Resource Information Authority 1:5,000 planimetric maps (2004) and Metro Manila Street Map (2010).

**Legend**

- Roads
- Contour lines
- Administrative boundaries
- Building footprints
- Major roads
- Water bodies

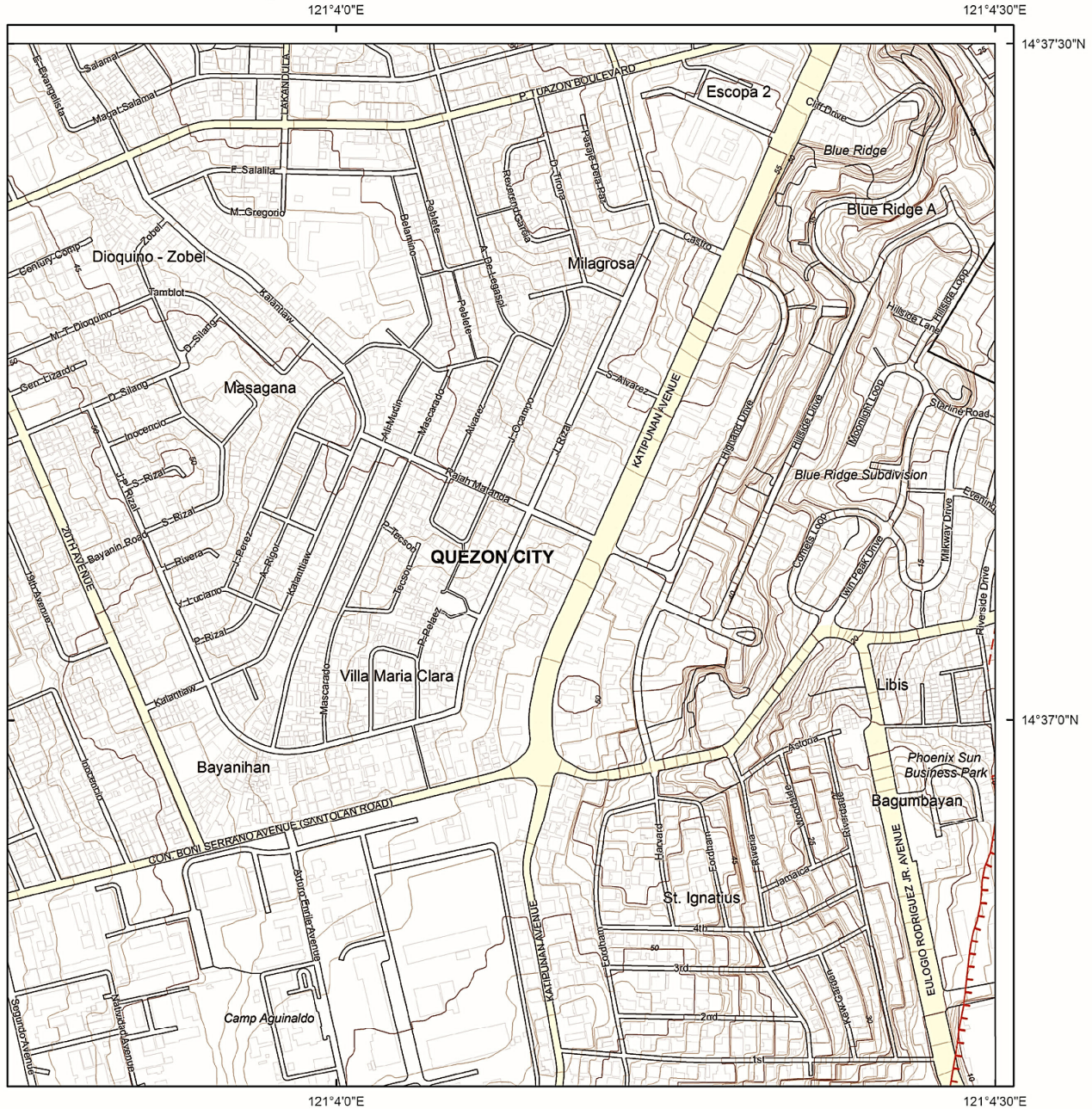
Disclaimer:  
Administrative boundaries are approximate  
(Risk Analysis Project, 2013).

**BOUNDARY DIAGRAM**

City / Municipality  
 1. Quezon City  
 2. San Juan City  
 3. Mandaluyong City



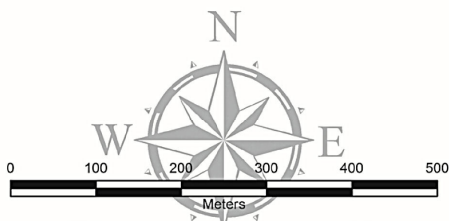
in Quezon City



INDEX TO ADJOINING SHEETS

3230 III 11 D	3230 III 12 A	3230 III 12 D
3230 III 11 C	3230 III 12 B	3230 III 12 C
3230 III 16 D	3230 III 17 A	3230 III 17 D

Shaded portion pertains to areas covered by the maps shown in these pages



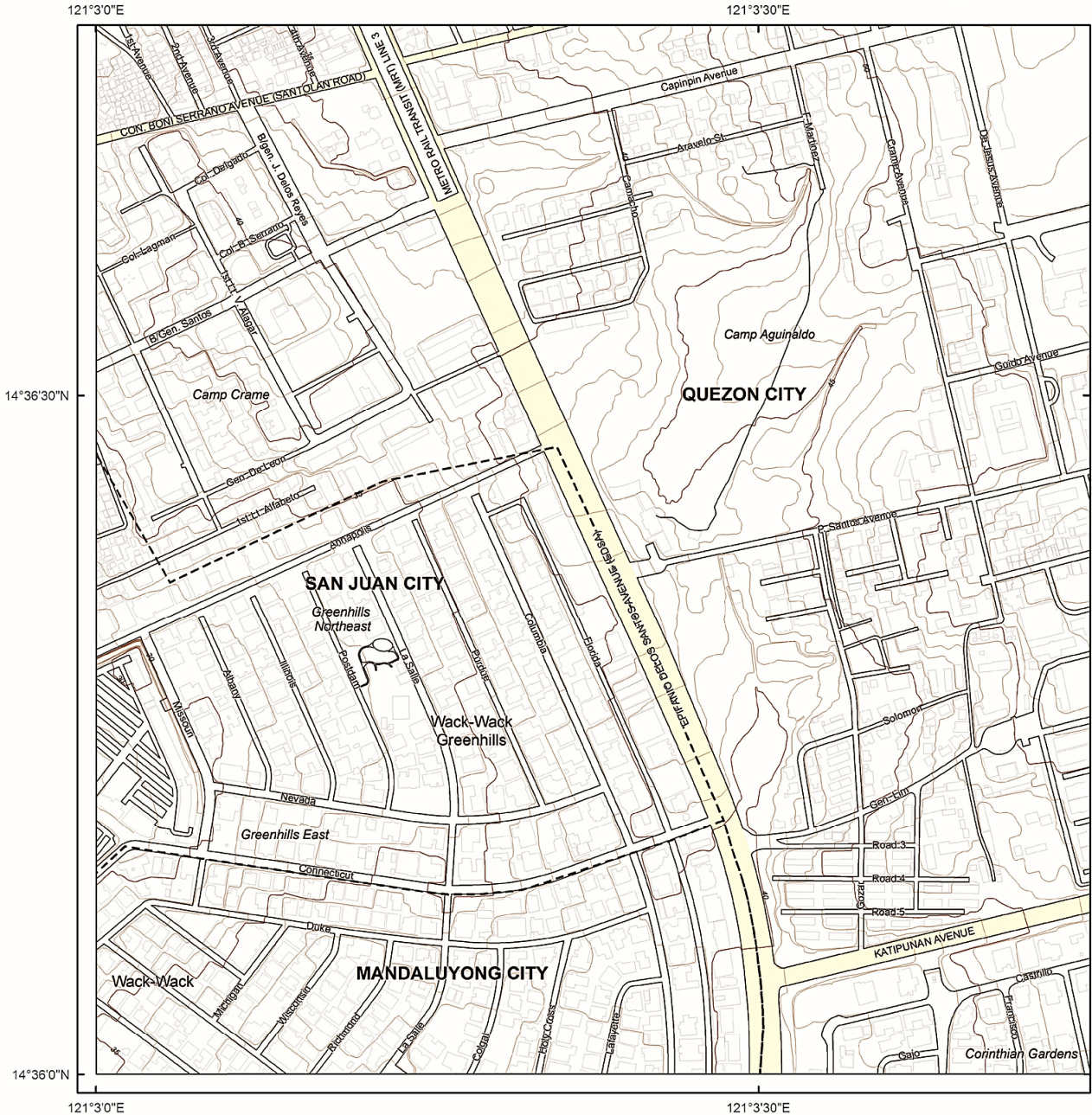
Spheroid..... Clarke 1866  
 Projection..... Transverse Mercator  
 Horizontal Datum..... Philippine Reference System 1992 (PRS92)  
 Vertical Datum..... Mean Sea Level  
 Contour Interval..... 1 meter



Department of Science and Technology  
**PHILIPPINE INSTITUTE OF VOLCANOLOGY AND SEISMOLOGY**  
 PHIVOLCS Building, C.P. Garcia Avenue  
 U.P. Campus, Diliman, Quezon City  
 Tel. No. : +63 2 426-1468 to 79 / Telefax: +63 2 929-8366  
 June 2014



# West Valley Fault



**Active Faults**

- Solid line - trace is certain; hachures indicate downthrown area
- Dashed line - trace is approximate
- Dotted line - trace is concealed

**Explanation**

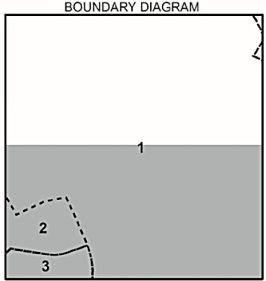
The Valley Fault System, consisting of the West Valley Fault and the East Valley Fault, was mapped by the Philippine Institute of Volcanology and Seismology using available data, such as aerial photographs, satellite imageries, topographic maps, earthquake epicenters and previous publications, and verified by field surveys. Some geomorphic features identified from aerial photographs may not be observable on the ground at present due to land modification. The recommended minimum buffer zone, or zone of avoidance, against ground rupture hazard is at least 5 meters as reckoned from both sides of the fault trace or from the edge of the deformation zone.

Base map are National Mapping and Resource Information Authority 1:5,000 planimetric maps (2004) and Metro Manila Street Map (2010).

**Legend**

- Roads
- Contour lines
- Administrative boundaries
- Building footprints
- Major roads
- Water bodies

Disclaimer:  
Administrative boundaries are approximate  
(Risk Analysis Project, 2013).



City / Municipality  
 1. Quezon City  
 2. San Juan City  
 3. Mandaluyong City



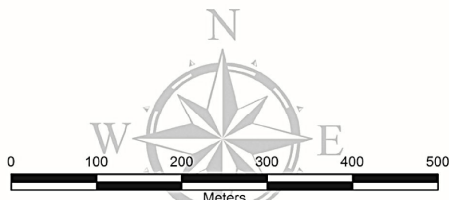
in Quezon City



INDEX TO ADJOINING SHEETS

3230 III 11 D	3230 III 12 A	3230 III 12 D
3230 III 11 C	3230 III 12 B	3230 III 12 C
3230 III 16 D	3230 III 17 A	3230 III 17 D

Shaded portion pertains to areas covered by the maps shown in these pages



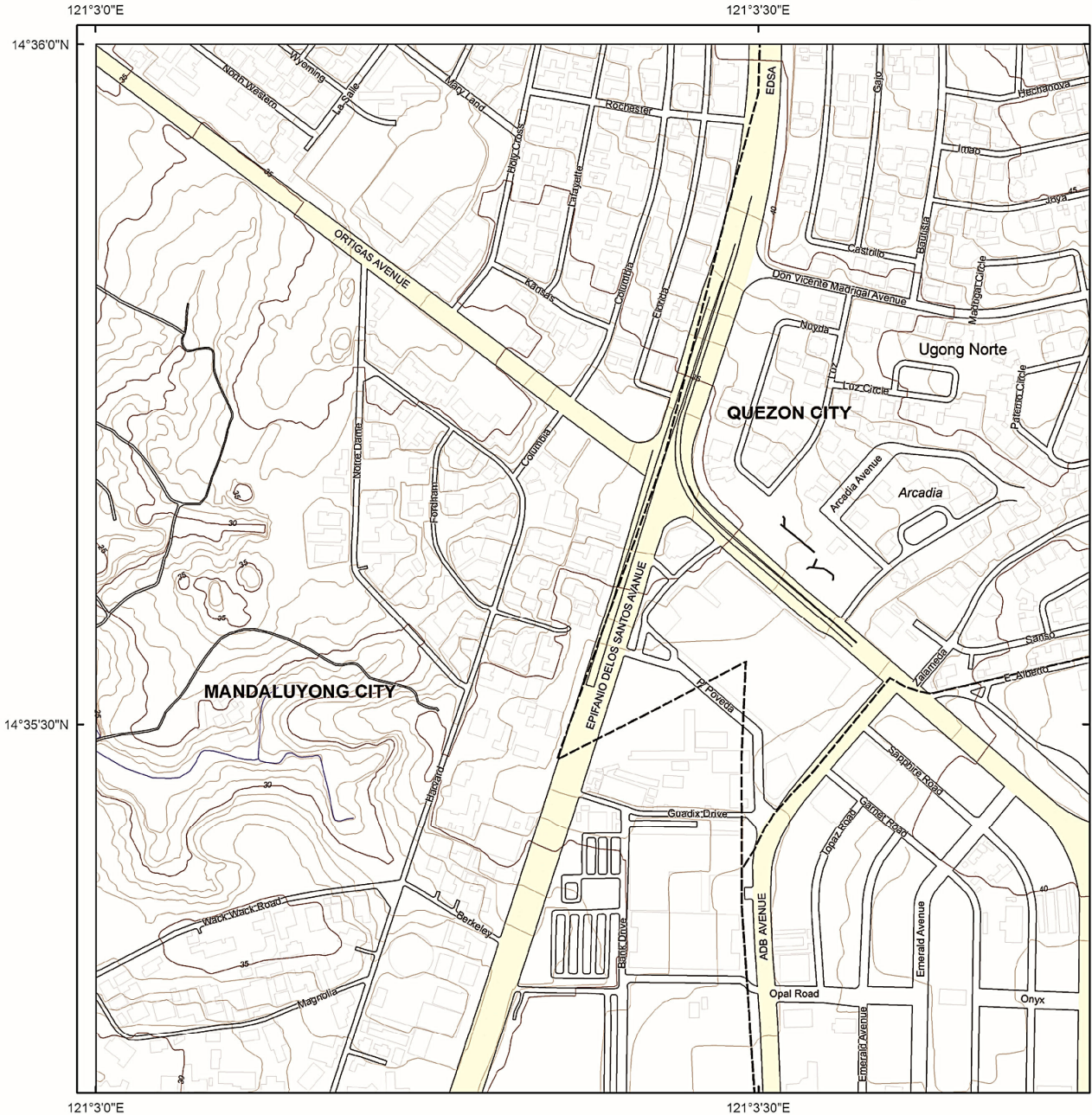
Spheroid..... Clarke 1866  
Projection..... Transverse Mercator  
Horizontal Datum..... Philippine Reference System 1992 (PRS92)  
Vertical Datum..... Mean Sea Level  
Contour Interval..... 1 meter



Department of Science and Technology  
PHILIPPINE INSTITUTE OF VOLCANOLOGY AND SEISMOLOGY  
PHIVOLCS Building, C.P. Garcia Avenue  
U.P. Campus, Diliman, Quezon City  
Tel. No. : +63 2 426-1468 to 79 Telefax: +63 2 929-8366  
June 2014



# West Valley Fault in



**Active Faults**

- Solid line - trace is certain; hachures indicate downthrown area
- - - Dashed line - trace is approximate
- · · Dotted line - trace is concealed

**Explanation**

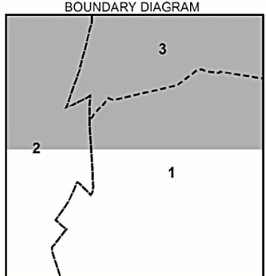
The Valley Fault System, consisting of the West Valley Fault and the East Valley Fault, was mapped by the Philippine Institute of Volcanology and Seismology using available data, such as aerial photographs, satellite imageries, topographic maps, earthquake epicenters and previous publications, and verified by field surveys. Some geomorphic features identified from aerial photographs may not be observable on the ground at present due to land modification. The recommended minimum buffer zone, or zone of avoidance, against ground rupture hazard is at least 5 meters as reckoned from both sides of the fault trace or from the edge of the deformation zone.

Base map are National Mapping and Resource Information Authority 1:5,000 planimetric maps (2004) and Metro Manila Street Map (2010).

**Legend**

- Roads
- Contour lines
- Administrative boundaries
- Building footprints
- Major roads
- Water bodies

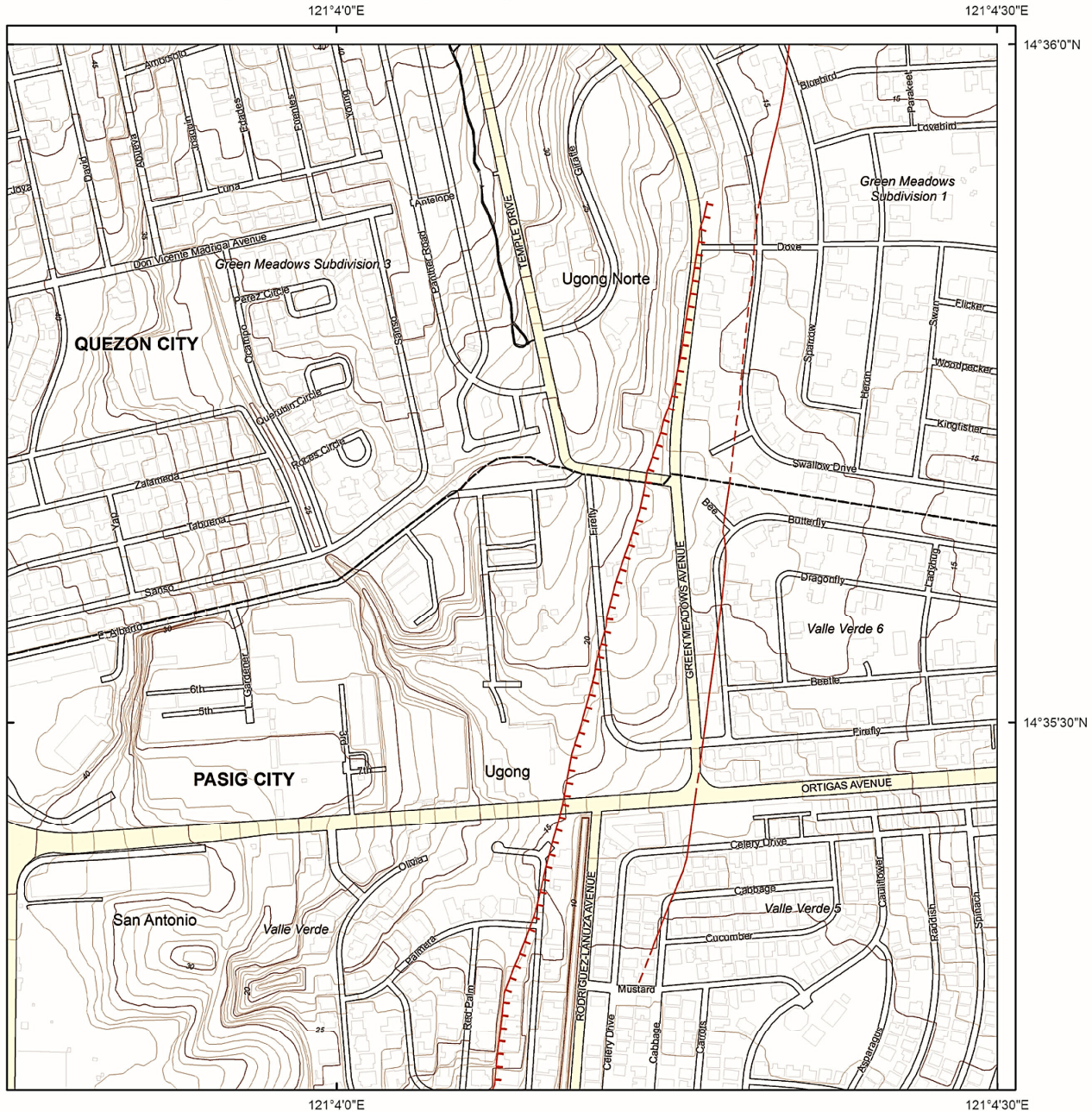
Disclaimer:  
Administrative boundaries are approximate  
(Risk Analysis Project, 2013).



City / Municipality  
1. Pasig City  
2. Mandaluyong City  
3. Quezon City



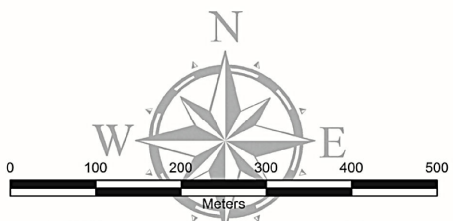
# Quezon City and Pasig City



INDEX TO ADJOINING SHEETS

3230 III 11 C	3230 III 12 B	3230 III 12 C
3230 III 16 D	3230 III 17 A	3230 III 17 D
3230 III 16 C	3230 III 17 B	3230 III 17 C

Shaded portion pertains to areas covered by the maps shown in these pages



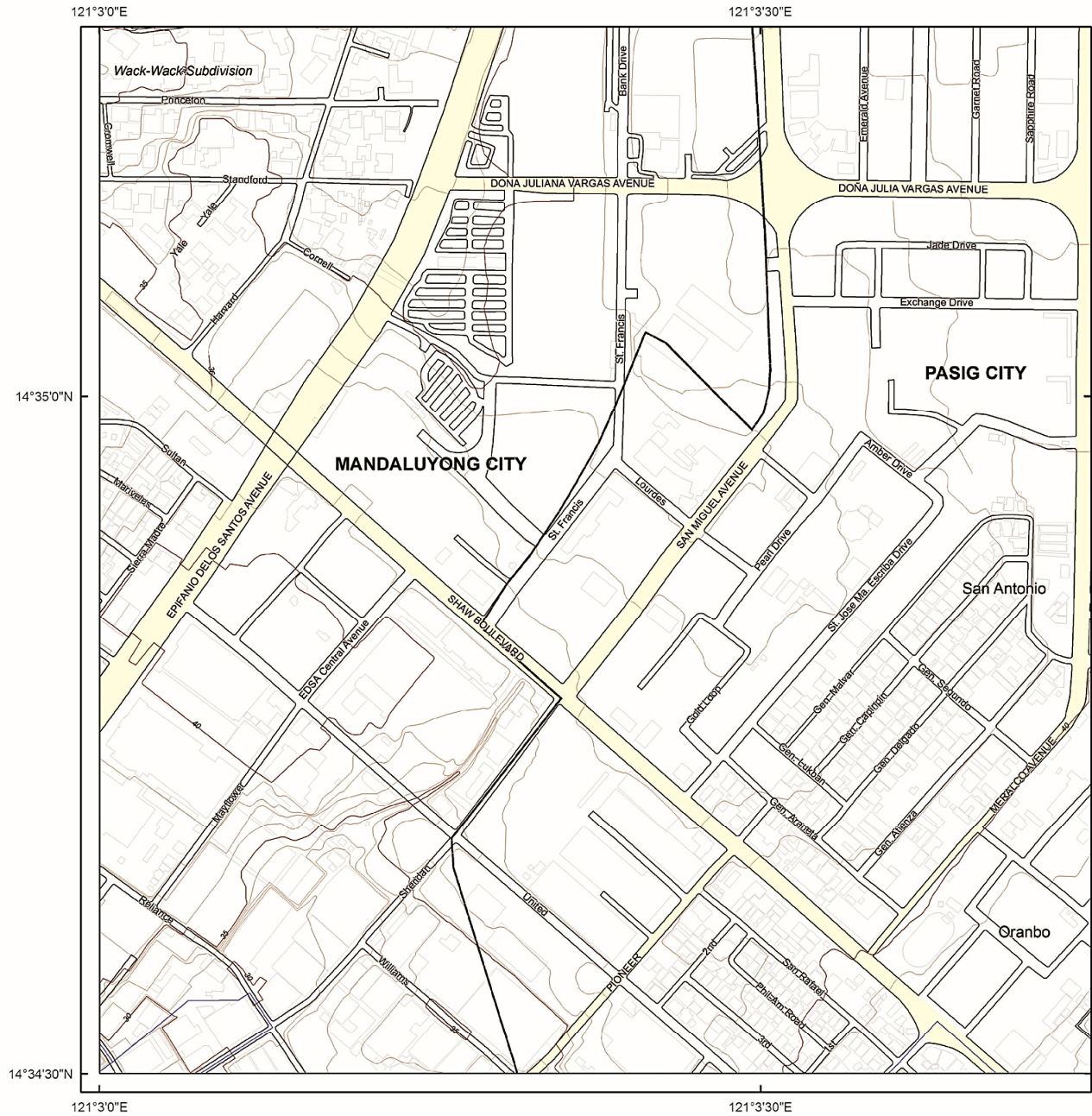
Spheroid..... Clarke 1886  
 Projection..... Transverse Mercator  
 Horizontal Datum..... Philippine Reference System 1992 (PRS92)  
 Vertical Datum..... Mean Sea Level  
 Contour Interval..... 1 meter



Department of Science and Technology  
**PHILIPPINE INSTITUTE OF VOLCANOLOGY AND SEISMOLOGY**  
 PHIVOLCS Building, C.P. Garcia Avenue  
 U.P. Campus, Diliman, Quezon City  
 Tel. No. : +63 2 426-1468 to 79 Telefax: +63 2 929-8366  
 June 2014



# West Valley Fault in



**Active Faults**

- Solid line - trace is certain; hachures indicate downthrown area
- - - Dashed line - trace is approximate
- · · Dotted line - trace is concealed

**Explanation**

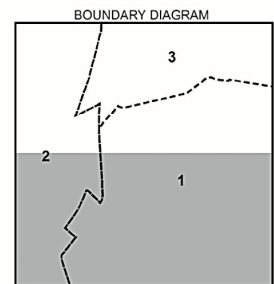
The Valley Fault System, consisting of the West Valley Fault and the East Valley Fault, was mapped by the Philippine Institute of Volcanology and Seismology using available data, such as aerial photographs, satellite imageries, topographic maps, earthquake epicenters and previous publications, and verified by field surveys. Some geomorphic features identified from aerial photographs may not be observable on the ground at present due to land modification. The recommended minimum buffer zone, or zone of avoidance, against ground rupture hazard is at least 5 meters as reckoned from both sides of the fault trace or from the edge of the deformation zone.

Base map are National Mapping and Resource Information Authority 1:5,000 planimetric maps (2004) and Metro Manila Street Map (2010).

**Legend**

- Roads
- Contour lines
- Administrative boundaries
- Building footprints
- Major roads
- Water bodies

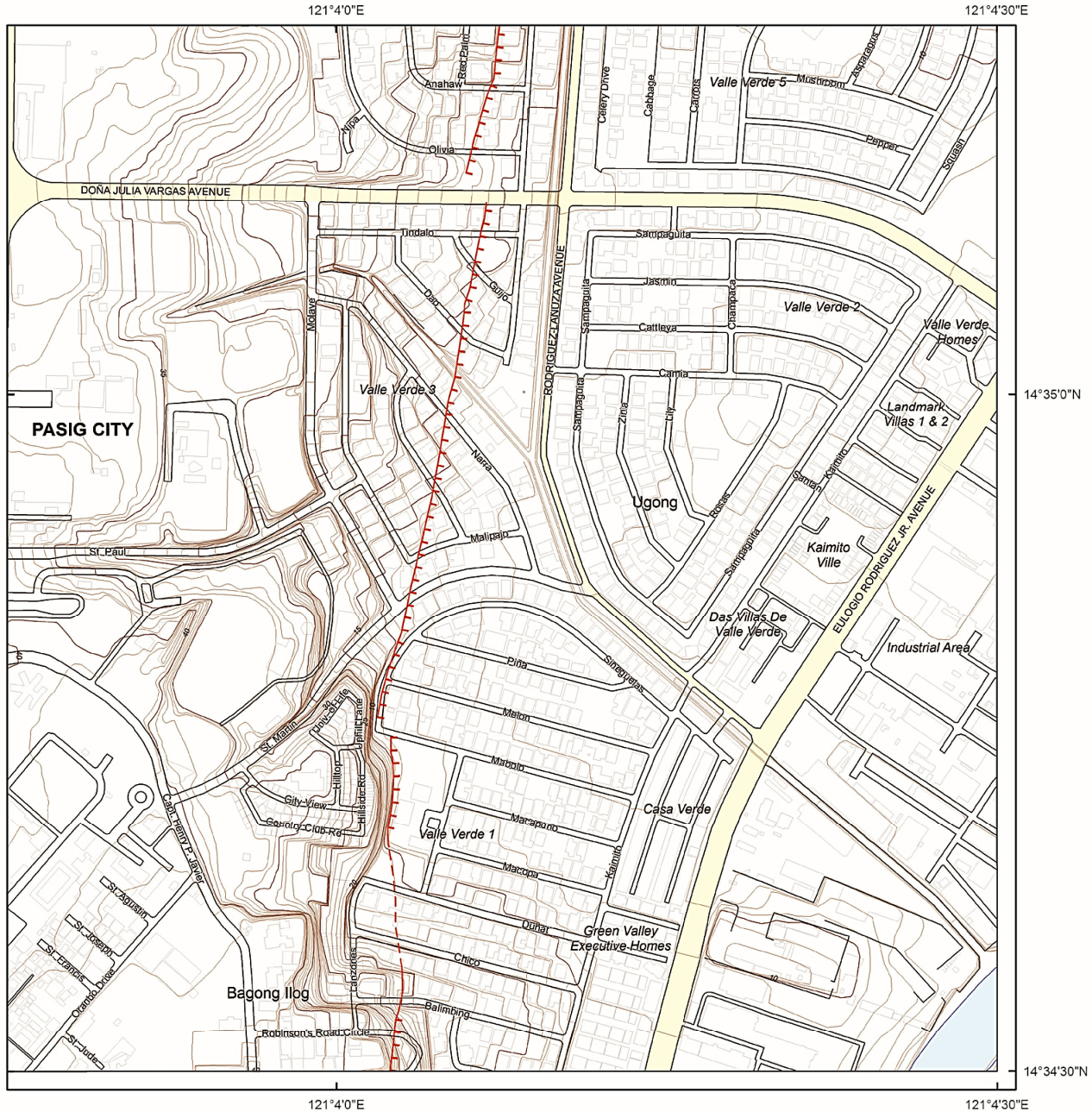
Disclaimer:  
Administrative boundaries are approximate  
(Risk Analysis Project, 2013).



City / Municipality  
 1. Pasig City  
 2. Mandaluyong City  
 3. Quezon City



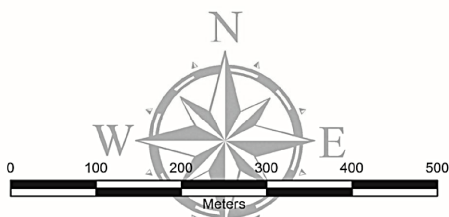
# Quezon City and Pasig City



INDEX TO ADJOINING SHEETS

3230 III 11 C	3230 III 12 B	3230 III 12 C
3230 III 16 D	3230 III 17 A	3230 III 17 D
3230 III 16 C	3230 III 17 B	3230 III 17 C

Shaded portion pertains to areas covered by the maps shown in these pages



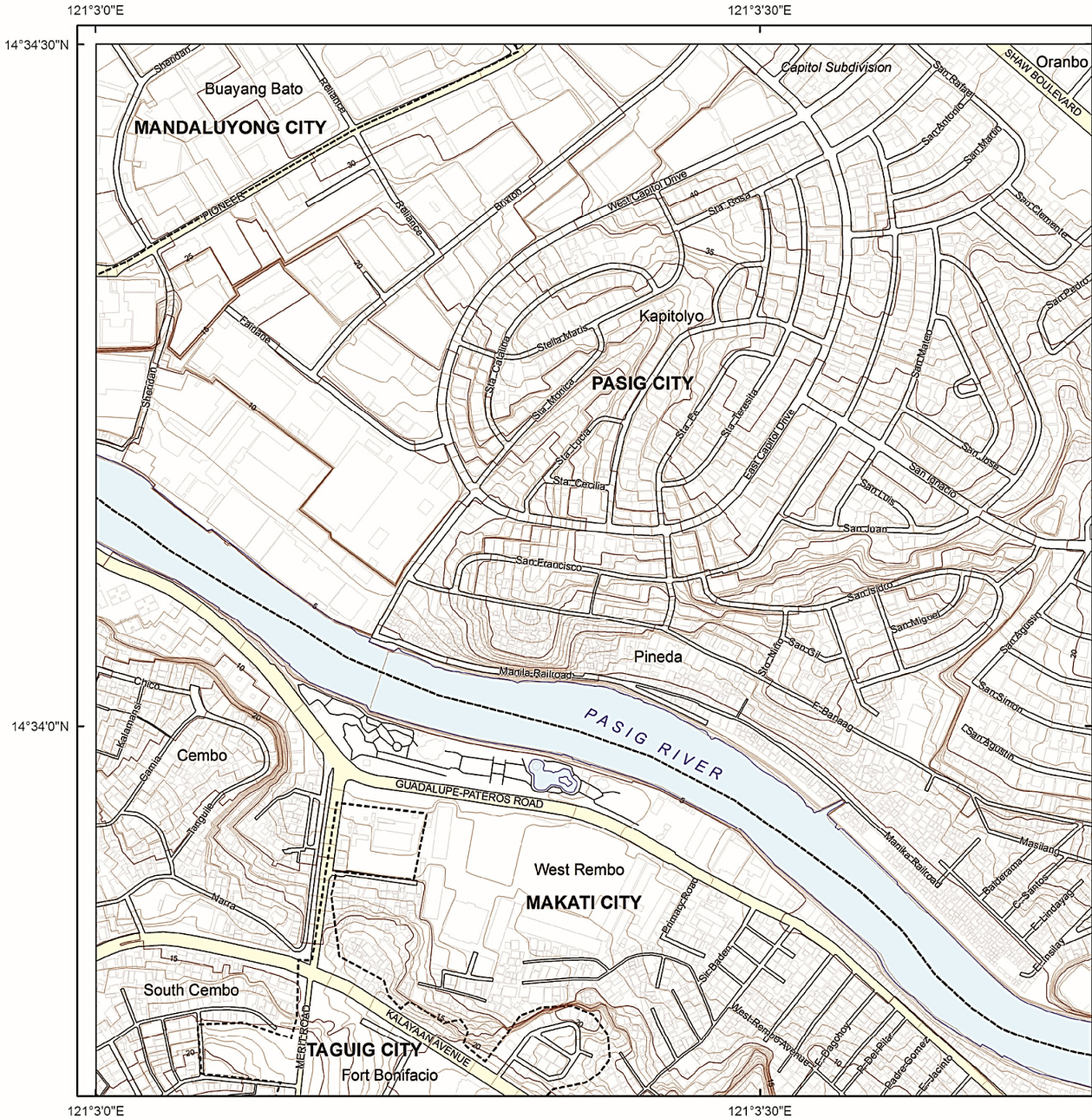
Spheroid..... Clarke 1866  
 Projection..... Transverse Mercator  
 Horizontal Datum..... Philippine Reference System 1992 (PRS92)  
 Vertical Datum..... Mean Sea Level  
 Contour Interval..... 1 meter



Department of Science and Technology  
**PHILIPPINE INSTITUTE OF VOLCANOLOGY AND SEISMOLOGY**  
 PHIVOLCS Building, C.P. Garcia Avenue  
 U.P. Campus, Diliman, Quezon City  
 Tel. No. : +63 2 426-1468 to 79 Telefax: +63 2 929-8366  
 June 2014



# West Valley Fault in



**Active Faults**

- Solid line - trace is certain; hachures indicate downthrown area
- - - Dashed line - trace is approximate
- · · · · Dotted line - trace is concealed

**Explanation**

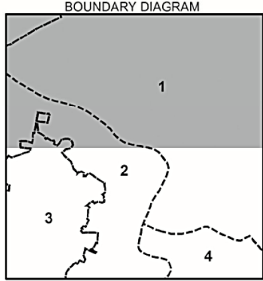
The Valley Fault System, consisting of the West Valley Fault and the East Valley Fault, was mapped by the Philippine Institute of Volcanology and Seismology using available data, such as aerial photographs, satellite imageries, topographic maps, earthquake epicenters and previous publications, and verified by field surveys. Some geomorphic features identified from aerial photographs may not be observable on the ground at present due to land modification. The recommended minimum buffer zone, or zone of avoidance, against ground rupture hazard is at least 5 meters as reckoned from both sides of the fault trace or from the edge of the deformation zone.

Base map are National Mapping and Resource Information Authority 1:5,000 planimetric maps (2004) and Metro Manila Street Map (2010).

**Legend**

- Roads
- Contour lines
- - - Administrative boundaries
- Building footprints
- Major roads
- Water bodies

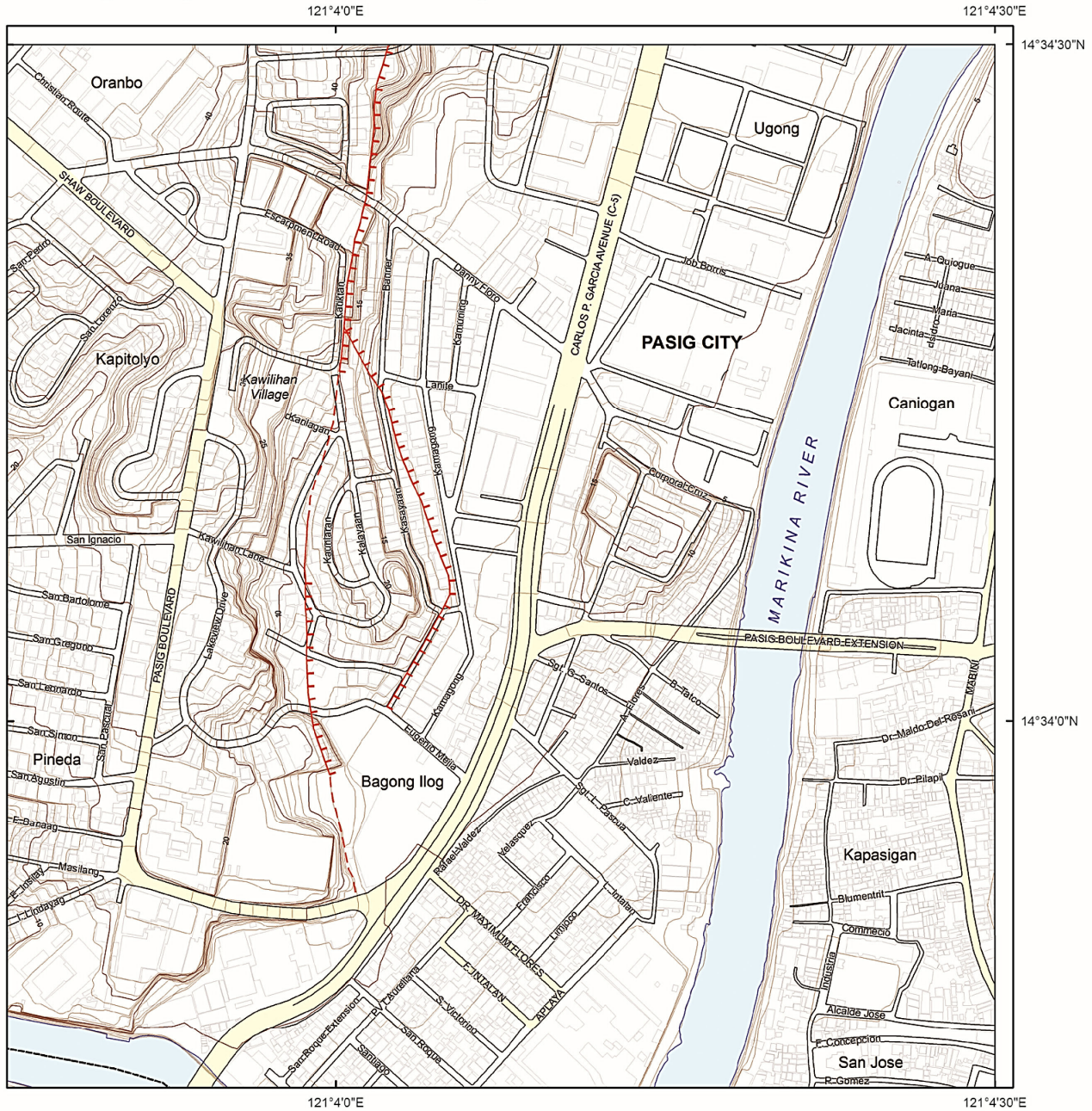
Disclaimer:  
Administrative boundaries are approximate  
(Risk Analysis Project, 2013).



City / Municipality  
 1. Pasig City  
 2. Makati City  
 3. Taguig City  
 4. Pateros



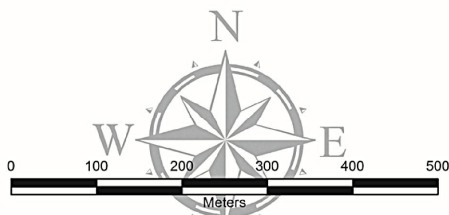
# Pasig City and Makati City



INDEX TO ADJOINING SHEETS

3230 III 16 D	3230 III 17 A	3230 III 17 D
3230 III 16 C	3230 III 17 B	3230 III 17 C
3230 III 21 D	3230 III 22 A	3230 III 22 D

Shaded portion pertains to areas covered by the maps shown in these pages



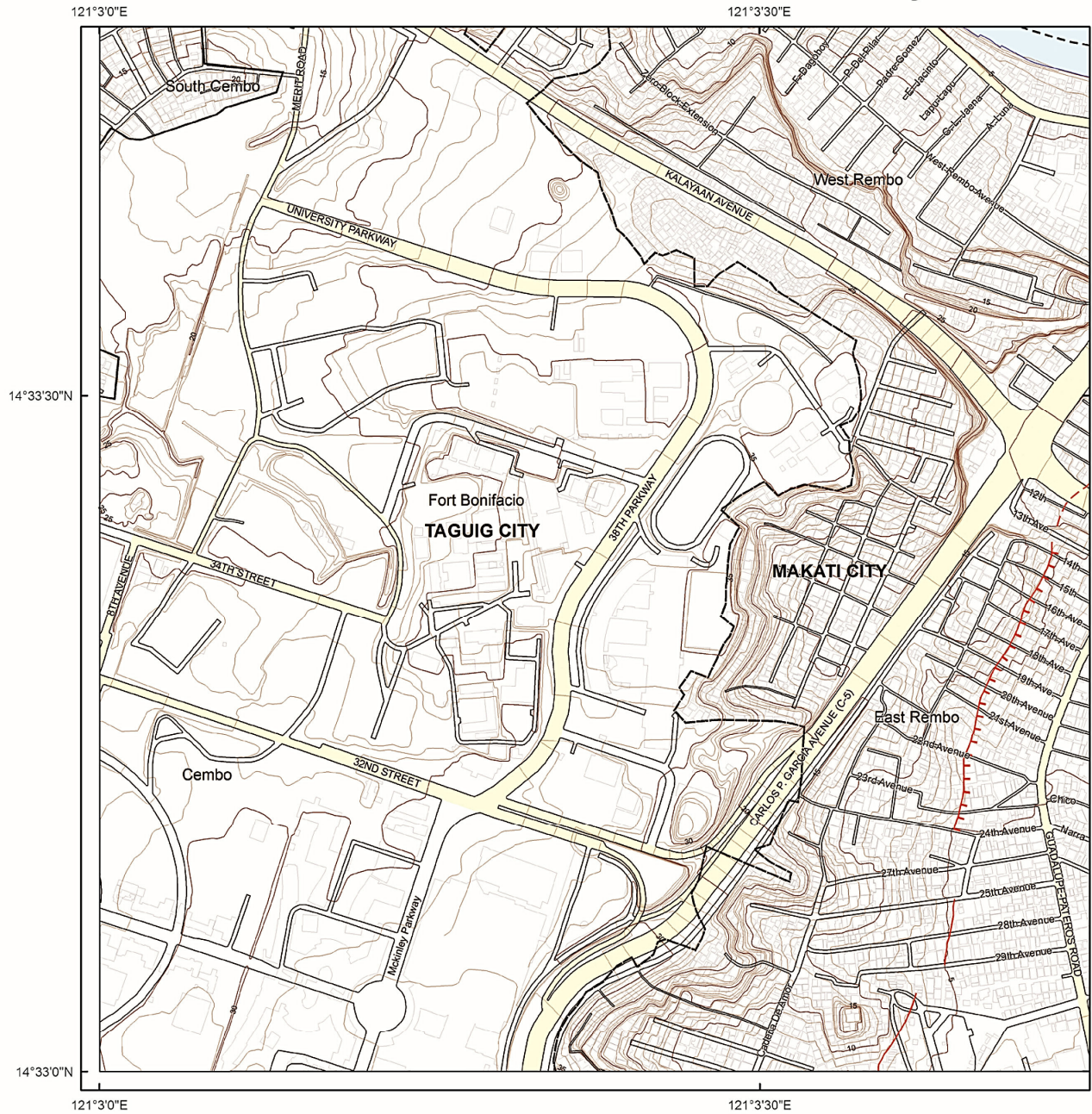
Spheroid..... Clarke 1866  
 Projection..... Transverse Mercator  
 Horizontal Datum..... Philippine Reference System 1992 (PRS92)  
 Vertical Datum..... Mean Sea Level  
 Contour Interval..... 1 meter



Department of Science and Technology  
**PHILIPPINE INSTITUTE OF VOLCANOLOGY AND SEISMOLOGY**  
 PHIVOLCS Building, C.P. Garcia Avenue  
 U.P. Campus, Diliman, Quezon City  
 Tel. No. : +63 2 426-1468 to 79 Telefax: +63 2 929-8366  
 June 2014



# West Valley Fault in



**Active Faults**

- Solid line - trace is certain; hachures indicate downthrown area
- Dashed line - trace is approximate
- Dotted line - trace is concealed

**Explanation**

The Valley Fault System, consisting of the West Valley Fault and the East Valley Fault, was mapped by the Philippine Institute of Volcanology and Seismology using available data, such as aerial photographs, satellite imageries, topographic maps, earthquake epicenters and previous publications, and verified by field surveys. Some geomorphic features identified from aerial photographs may not be observable on the ground at present due to land modification. The recommended minimum buffer zone, or zone of avoidance, against ground rupture hazard is at least 5 meters as reckoned from both sides of the fault trace or from the edge of the deformation zone.

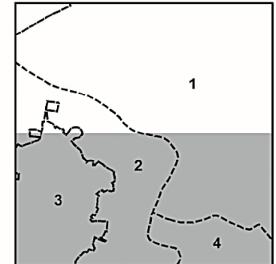
Base map are National Mapping and Resource Information Authority 1:5,000 planimetric maps (2004) and Metro Manila Street Map (2010).

**Legend**

- Roads
- Contour lines
- Administrative boundaries
- Building footprints
- Major roads
- Water bodies

Disclaimer:  
Administrative boundaries are approximate  
(Risk Analysis Project, 2013).

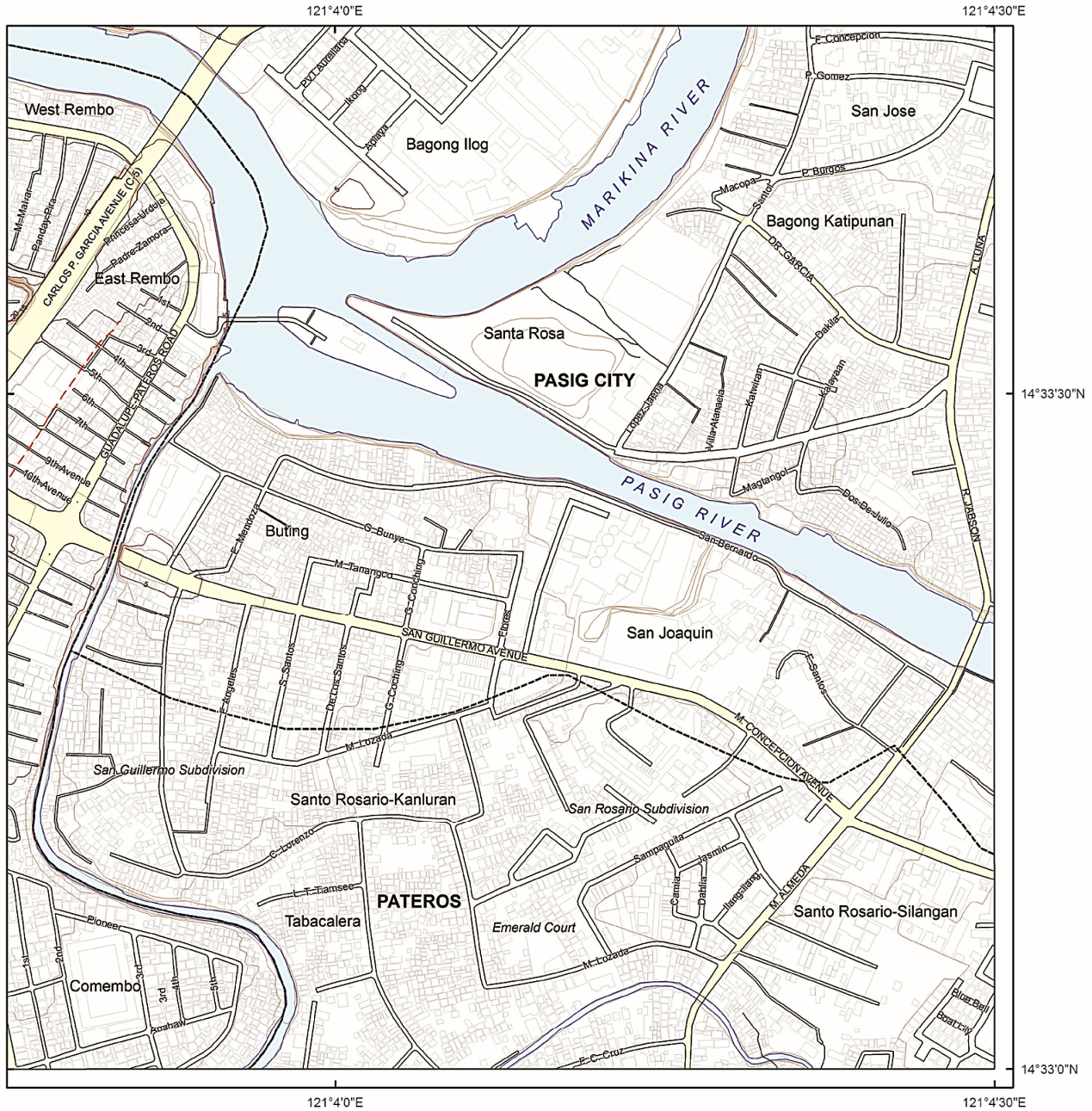
**BOUNDARY DIAGRAM**



- City / Municipality
- 1. Pasig City
  - 2. Makati City
  - 3. Taguig City
  - 4. Pateros



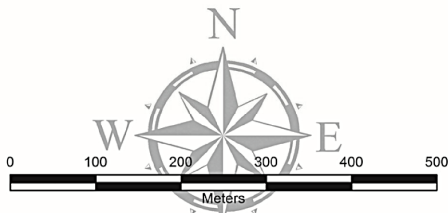
# Pasig City and Makati City



INDEX TO ADJOINING SHEETS

3230 III 16 D	3230 III 17 A	3230 III 17 D
3230 III 16 C	3230 III 17 B	3230 III 17 C
3230 III 21 D	3230 III 22 A	3230 III 22 D

Shaded portion pertains to areas covered by the maps shown in these pages



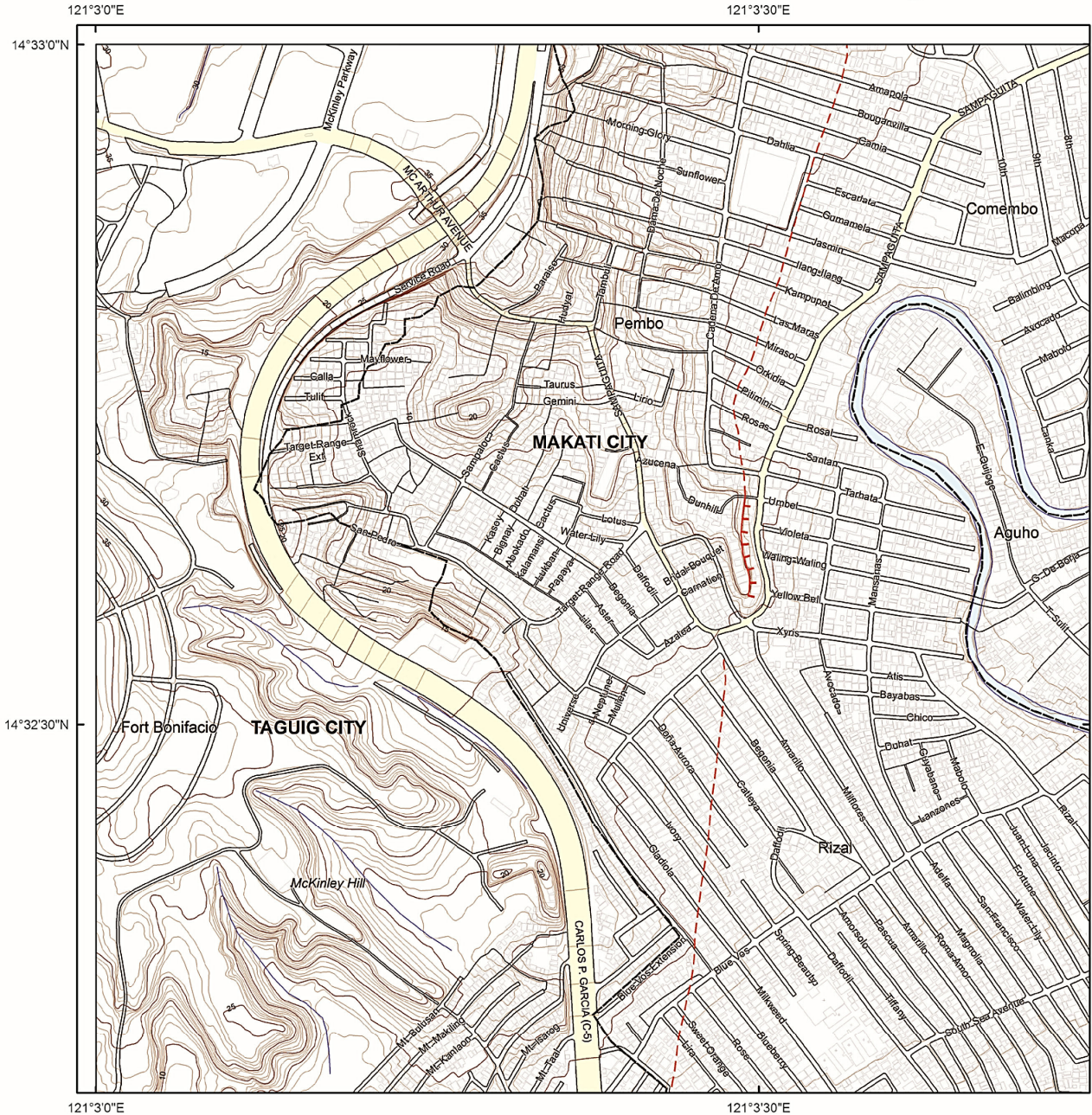
Spheroid..... Clarke 1866  
 Projection..... Transverse Mercator  
 Horizontal Datum..... Philippine Reference System 1992 (PRS92)  
 Vertical Datum..... Mean Sea Level  
 Contour Interval..... 1 meter



Department of Science and Technology  
**PHILIPPINE INSTITUTE OF VOLCANOLOGY AND SEISMOLOGY**  
 PHIVOLCS Building, C.P. Garcia Avenue  
 U.P. Campus, Diliman, Quezon City  
 Tel. No. : +63 2 426-1468 to 79    Telefax: +63 2 929-8366  
 June 2014



# West Valley Fault in



**Active Faults**

- Solid line - trace is certain; hachures indicate downthrown area
- Dashed line - trace is approximate
- Dotted line - trace is concealed

**Explanation**

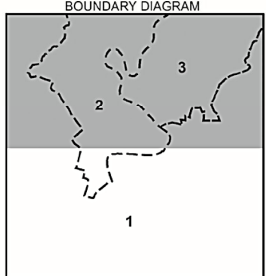
The Valley Fault System, consisting of the West Valley Fault and the East Valley Fault, was mapped by the Philippine Institute of Volcanology and Seismology using available data, such as aerial photographs, satellite imageries, topographic maps, earthquake epicenters and previous publications, and verified by field surveys. Some geomorphic features identified from aerial photographs may not be observable on the ground at present due to land modification. The recommended minimum buffer zone, or zone of avoidance, against ground rupture hazard is at least 5 meters as reckoned from both sides of the fault trace or from the edge of the deformation zone.

Base map are National Mapping and Resource Information Authority 1:5,000 planimetric maps (2004) and Metro Manila Street Map (2010).

**Legend**

- Roads
- Contour lines
- Administrative boundaries
- Building footprints
- Major roads
- Water bodies

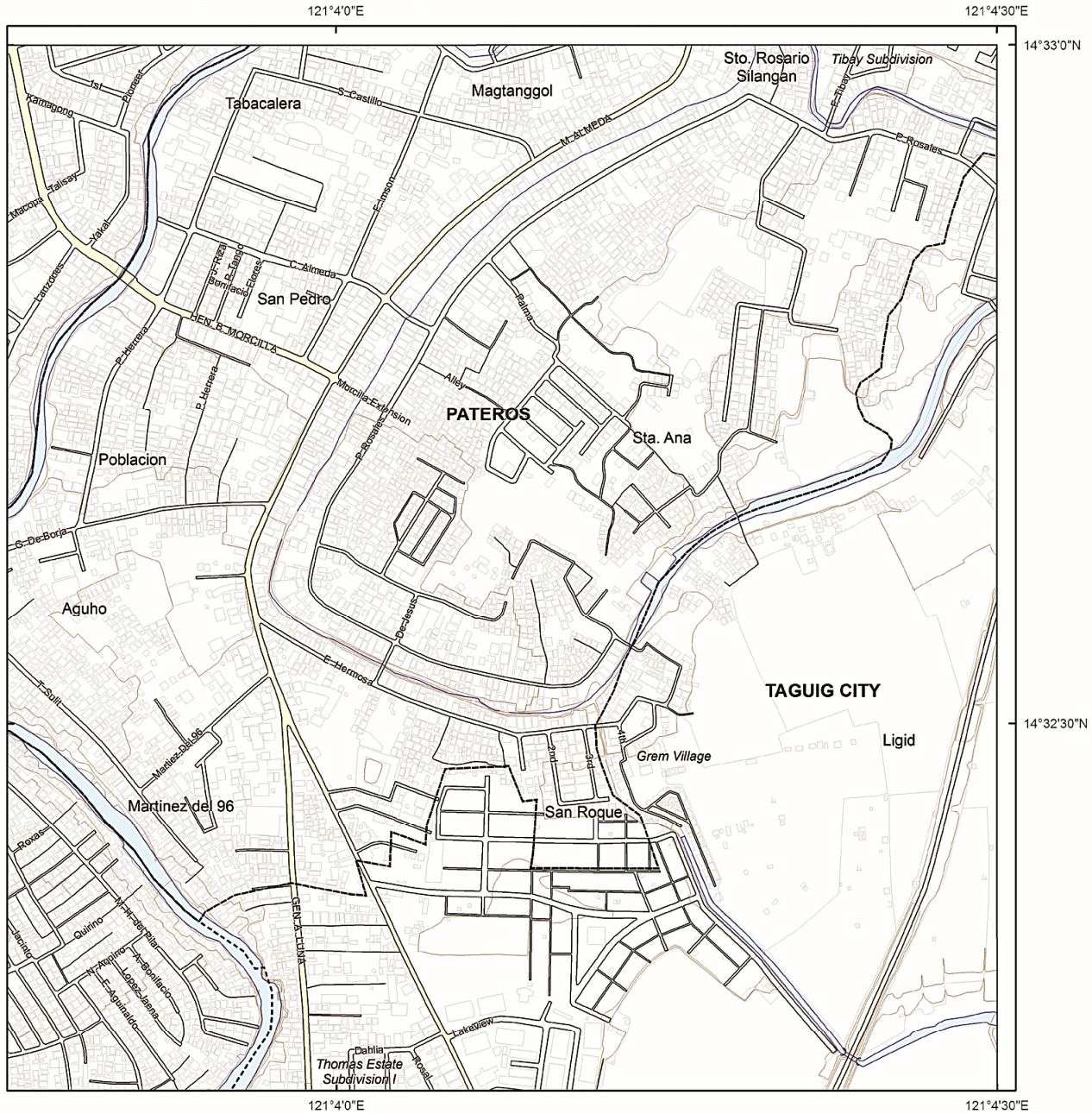
Disclaimer:  
Administrative boundaries are approximate  
(Risk Analysis Project, 2013).



City / Municipality  
1. Taguig City  
2. Makati City  
3. Pateros



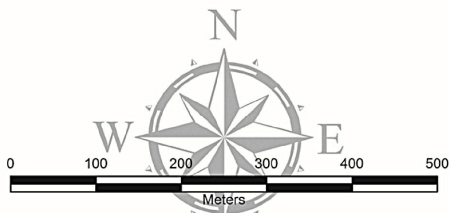
# Makati City and Taguig City



INDEX TO ADJOINING SHEETS

3230 III 16 C	3230 III 17 B	3230 III 17 C
3230 III 21 D	3230 III 22 A	3230 III 22 D
3230 III 21 C	3230 III 22 B	3230 III 22 C

Shaded portion pertains to areas covered by the maps shown in these pages



Spheroid..... Clarke 1866  
 Projection..... Transverse Mercator  
 Horizontal Datum..... Philippine Reference System 1992 (PRS92)  
 Vertical Datum..... Mean Sea Level  
 Contour Interval..... 1 meter



Department of Science and Technology  
**PHILIPPINE INSTITUTE OF VOLCANOLOGY AND SEISMOLOGY**  
 PHIVOLCS Building, C.P. Garcia Avenue  
 U.P. Campus, Diliman, Quezon City  
 Tel. No. : +63 2 426-1468 to 79 Telefax: +63 2 929-8366  
 June 2014