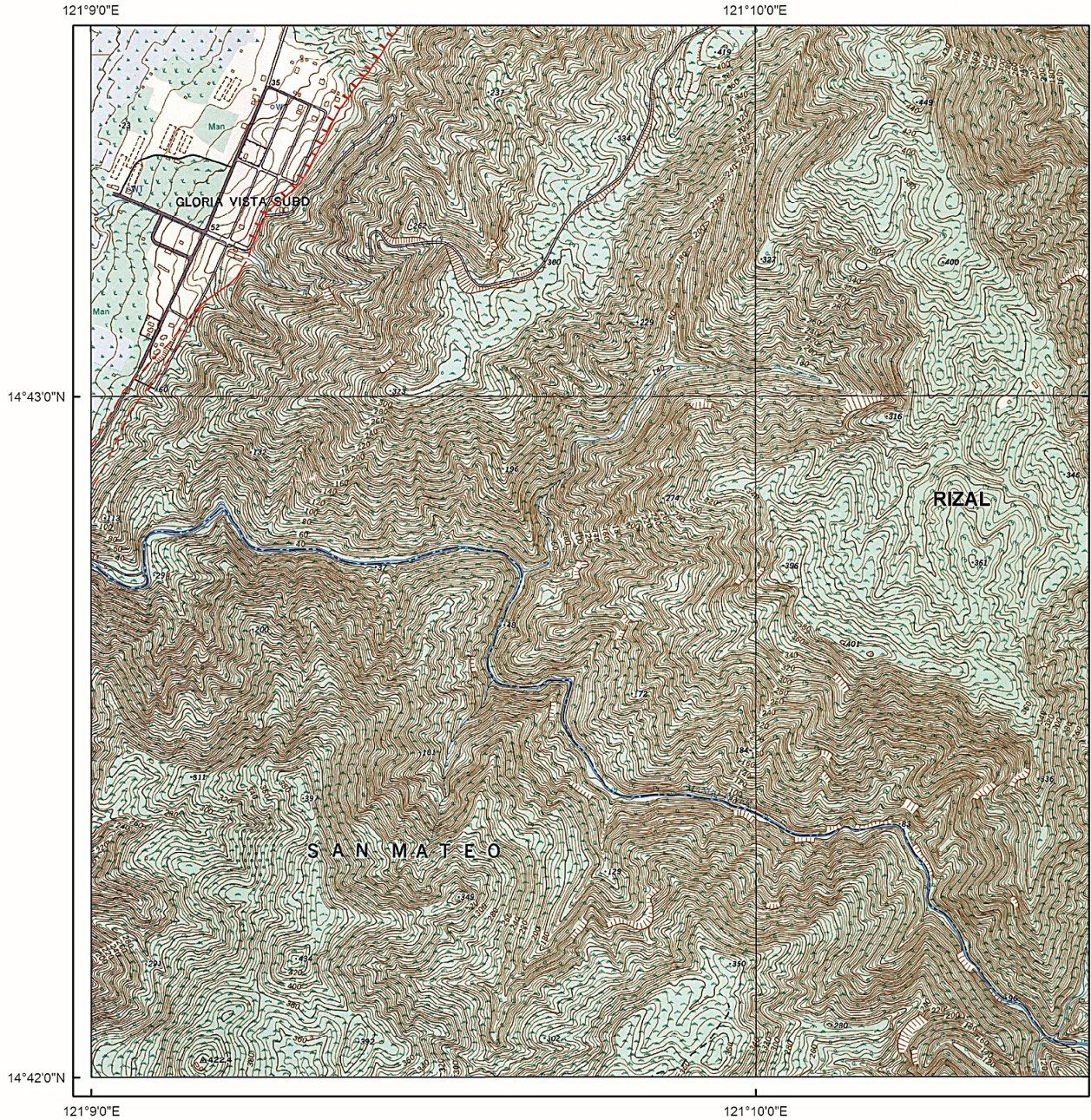


East Valley Fault



Active Faults

- Solid line - trace is certain; hachures indicate downthrown area
- Dashed line - trace is approximate
- Dotted line - trace is concealed

Explanation

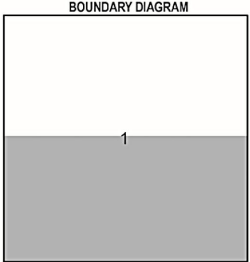
The Valley Fault System, consisting of the West Valley Fault and the East Valley Fault, was mapped by the Philippine Institute of Volcanology and Seismology using available data, such as aerial photographs, satellite imageries, topographic maps, earthquake epicenters and previous publications, and verified by field surveys. Some geomorphic features identified from aerial photographs may not be observable on the ground at present due to land modification. The recommended minimum buffer zone, or zone of avoidance, against ground rupture hazard is at least 5 meters as reckoned from both sides of the fault trace or from the edge of the deformation zone.

Base map is National Mapping and Resource Information Authority 1:10,000 topographic maps (1987).

Legend

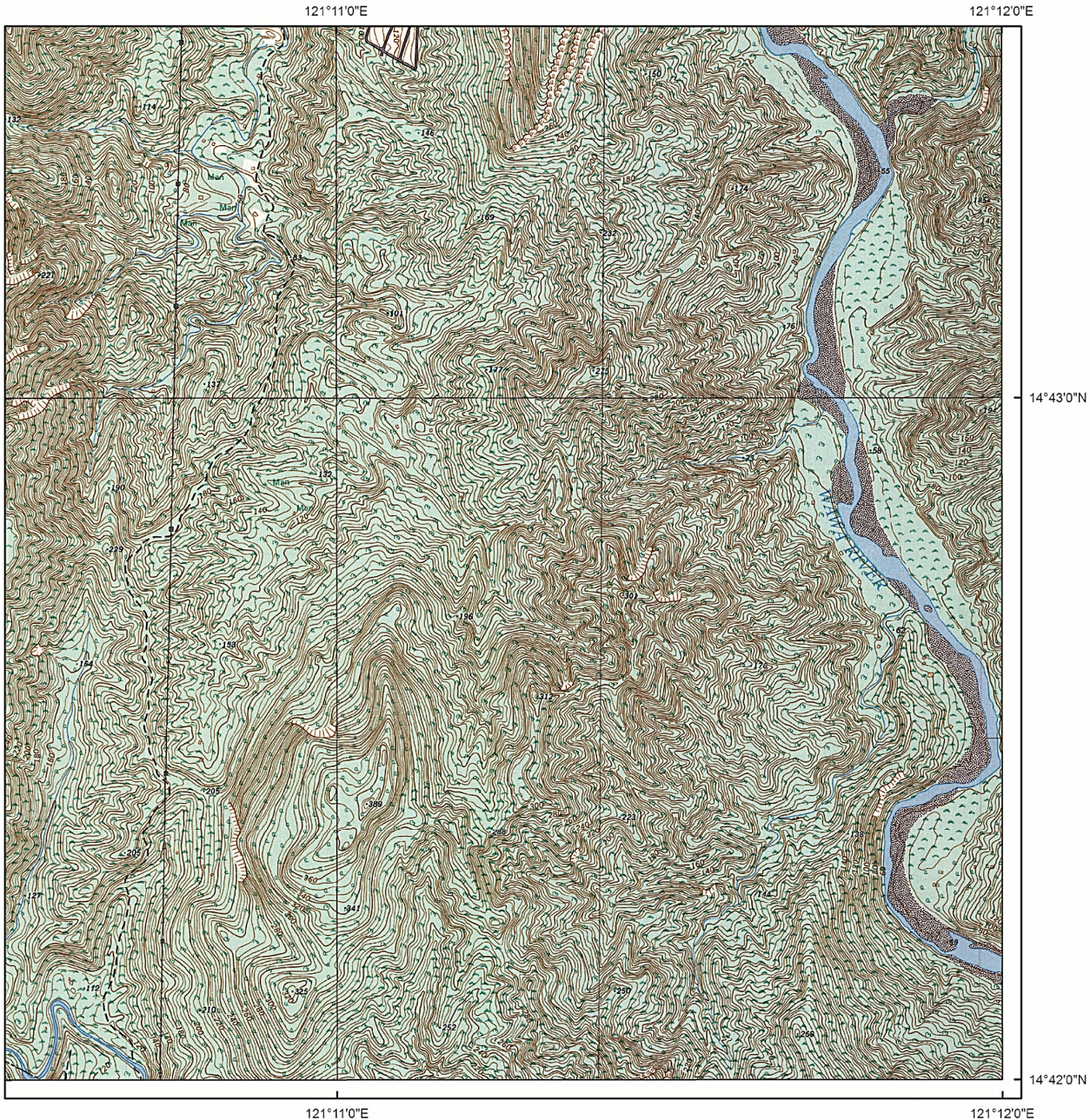
- River/ Stream
- National/ Provincial Road
- Index Contour
- Supplementary Contour
- Intermediate Contour
- Vegetation
- Swamp/ Marsh
- Building Footprints

Disclaimer:
Administrative boundaries are approximate.



REGION IV-A
1. Rizal

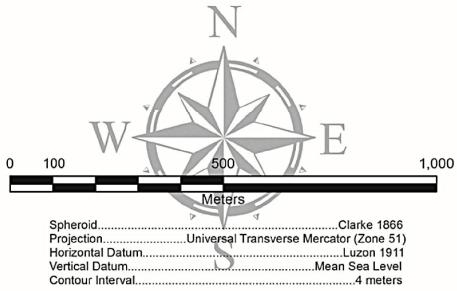
in Rizal



INDEX TO ADJOINING SHEETS

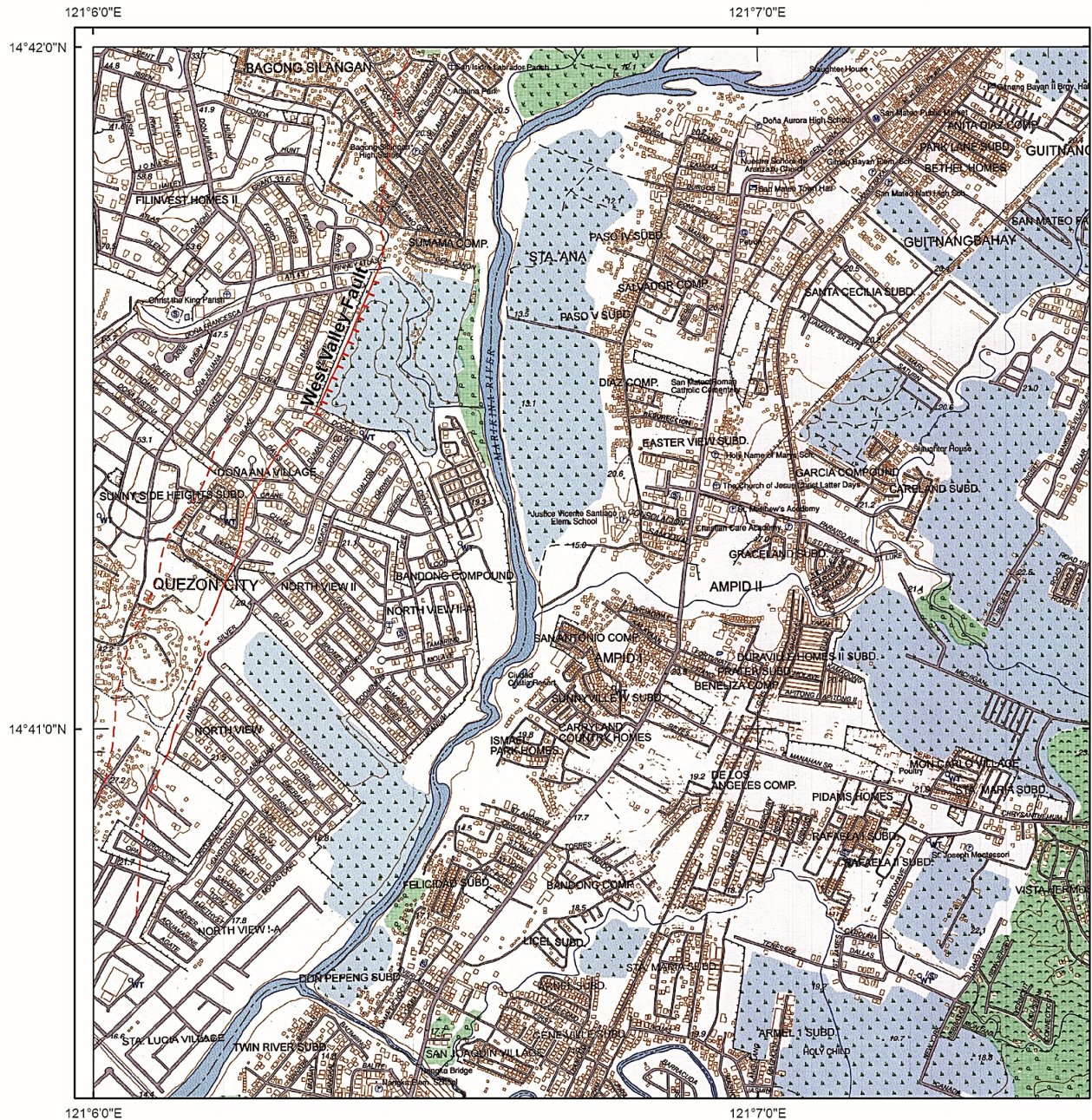
3230-IV-23		
3230-III-3	3230-III-4 SAN RAFAEL	
3230-III-8	3230-III-9	

Shaded portion pertains to areas covered by the maps shown in these pages



DOST
 Department of Science and Technology
PHILIPPINE INSTITUTE OF VOLCANOLOGY AND SEISMOLOGY
 PHIVOLCS Building, C.P. Garcia Avenue
 U.P. Campus, Diliman, Quezon City
 Tel. No. +63 2 426-1468 to 79 Telefax: +63 2 929-8366
 June 2014

Valley Fault System in



Active Faults

- Solid line - trace is certain; hachures indicate downthrown area
- - - Dashed line - trace is approximate
- Dotted line - trace is concealed

Explanation

The Valley Fault System, consisting of the West Valley Fault and the East Valley Fault, was mapped by the Philippine Institute of Volcanology and Seismology using available data, such as aerial photographs, satellite imageries, topographic maps, earthquake epicenters and previous publications, and verified by field surveys. Some geomorphic features identified from aerial photographs may not be observable on the ground at present due to land modification. The recommended minimum buffer zone, or zone of avoidance, against ground rupture hazard is at least 5 meters as reckoned from both sides of the fault trace or from the edge of the deformation zone.

Base map is National Mapping and Resource Information Authority 1:10,000 topographic maps (2007).

Legend

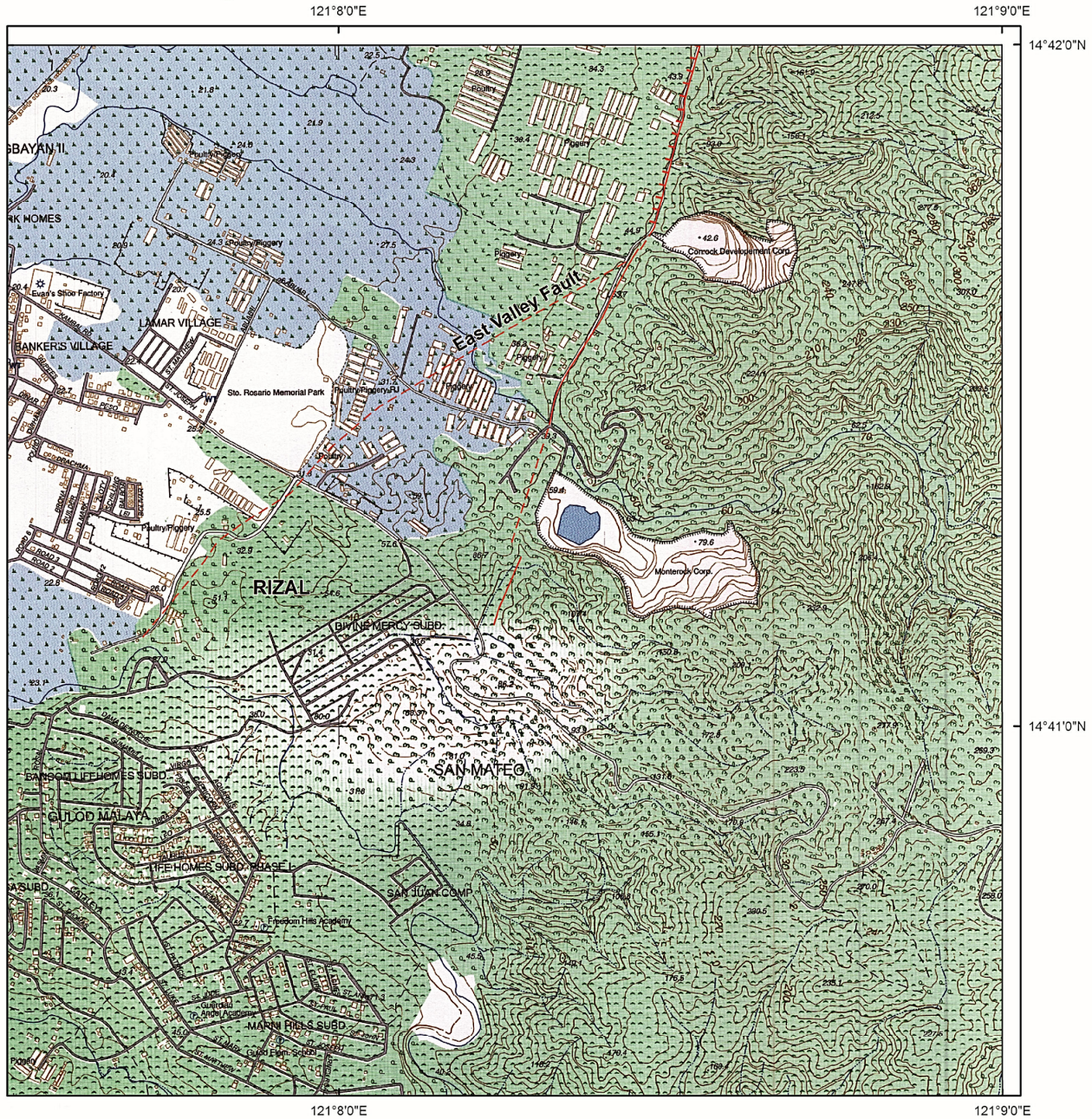
- River/ Stream
- National/ Provincial Road
- Index Contour
- Supplementary Contour
- Intermediate Contour
- Vegetation
- Swamp/ Marsh
- Building Footprints

BOUNDARY DIAGRAM

REGION IV-A
 1. Rizal
 NATIONAL CAPITAL REGION
 2. Quezon City
 3. Marikina City

Disclaimer:
 Administrative boundaries are approximate.

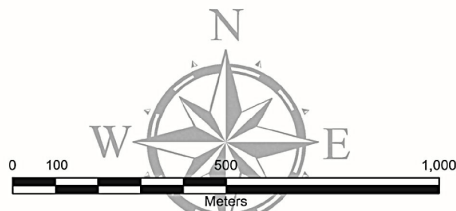
Quezon City and Rizal



INDEX TO ADJOINING SHEETS

3230 III 2	3230 III 3	3230 III 4
3230 III 7	3230 III 8	3230 III 9
3230 III 12	3230 III 13	3230 III 14

Shaded portion pertains to areas covered by the maps shown in these pages

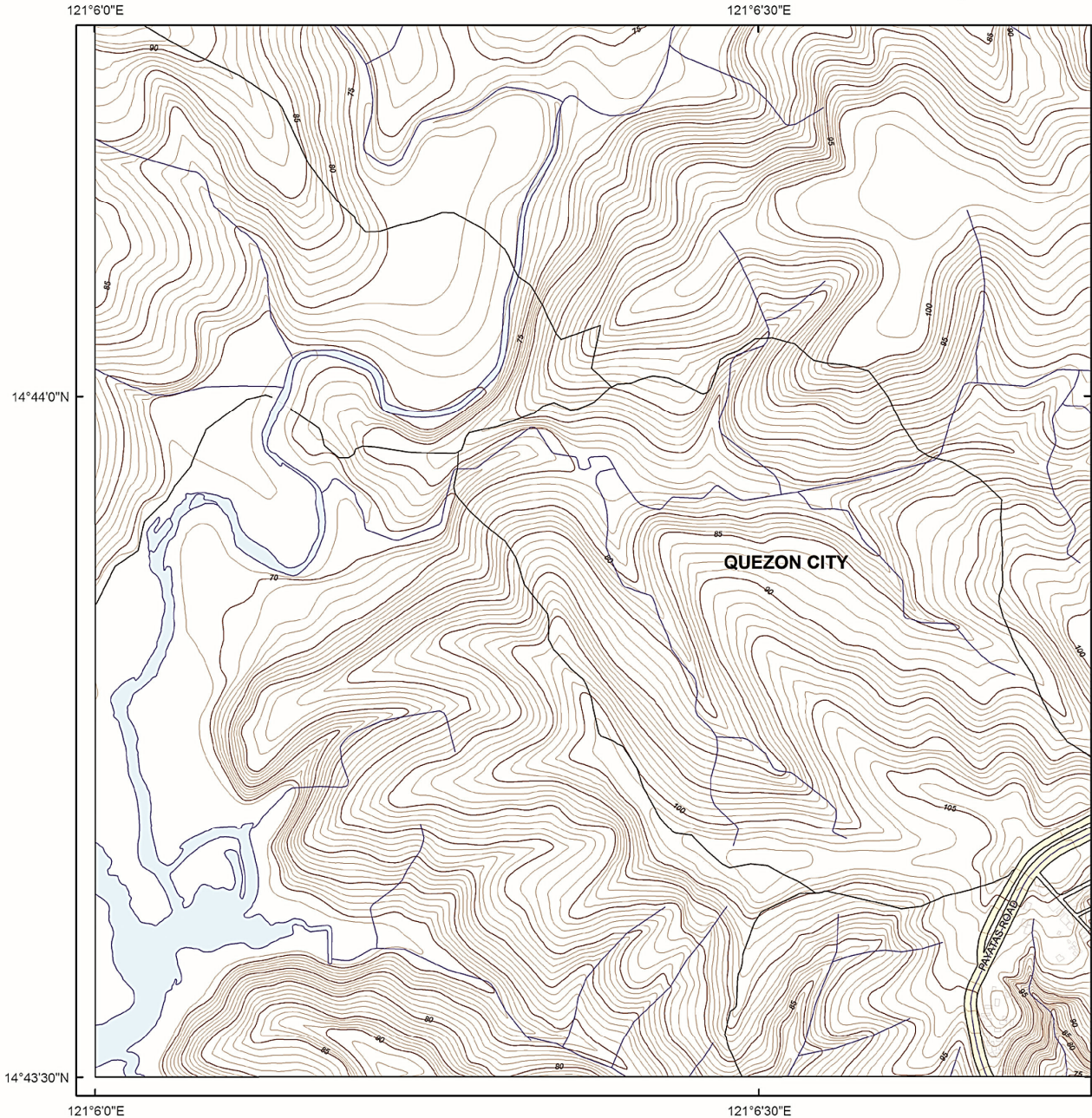


Spheroid..... Clarke 1866
 Projection..... Universal Transverse Mercator (Zone 51)
 Horizontal Datum..... Luzon 1911
 Vertical Datum..... Mean Sea Level
 Contour Interval..... 10 meters



Department of Science and Technology
PHILIPPINE INSTITUTE OF VOLCANOLOGY AND SEISMOLOGY
 PHIVOLCS Building, C.P. Garcia Avenue
 U.P. Campus, Diliman, Quezon City
 Tel. No. : +63 2 426-1468 to 79 Telefax: +63 2 929-8366
 June 2014

West Valley Fault



Active Faults

- Solid line - trace is certain; hachures indicate downthrown area
- - - Dashed line - trace is approximate
- · · Dotted line - trace is concealed

Explanation

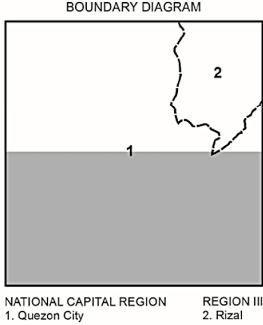
The Valley Fault System, consisting of the West Valley Fault and the East Valley Fault, was mapped by the Philippine Institute of Volcanology and Seismology using available data, such as aerial photographs, satellite imageries, topographic maps, earthquake epicenters and previous publications, and verified by field surveys. Some geomorphic features identified from aerial photographs may not be observable on the ground at present due to land modification. The recommended minimum buffer zone, or zone of avoidance, against ground rupture hazard is at least 5 meters as reckoned from both sides of the fault trace or from the edge of the deformation zone.

Base map are National Mapping and Resource Information Authority 1:5,000 planimetric maps (2004) and Metro Manila Street Map (2010).

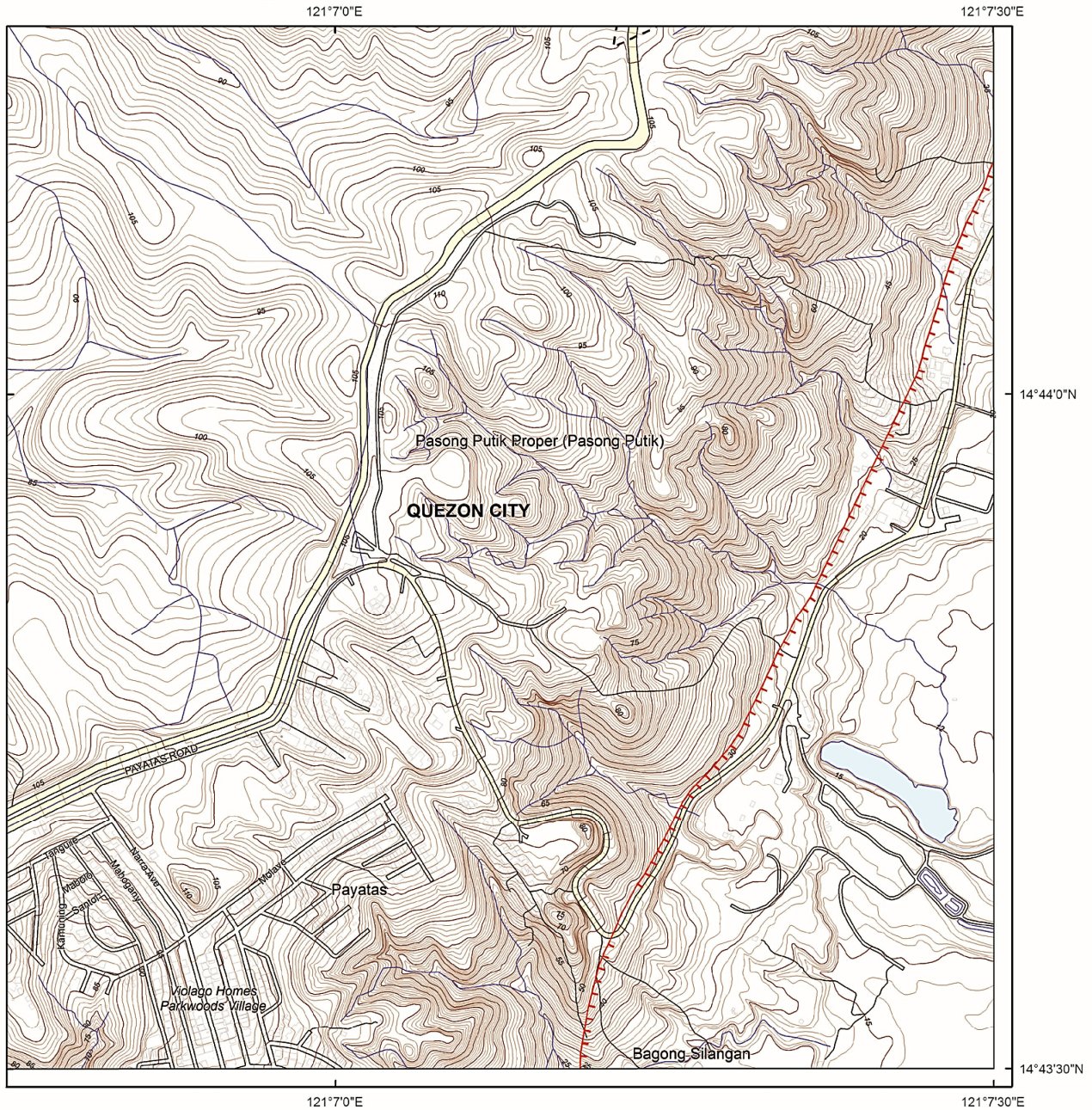
Legend

- Roads
- Contour lines
- - - Administrative boundaries
- Building footprints
- Major roads
- Water bodies

Disclaimer:
Administrative boundaries are approximate
(Risk Analysis Project, 2013).



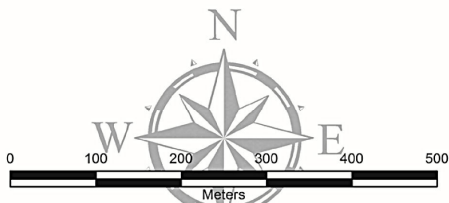
in Quezon City



INDEX TO ADJOINING SHEETS

3230 IV 22 C	3230 IV 23 B	3230 IV 23 C
3230 III 2 D	3230 III 3 A	3230 III 3 D
3230 III 2 C	3230 III 3 B	3230 III 3 C

Shaded portion pertains to areas covered by the maps shown in these pages

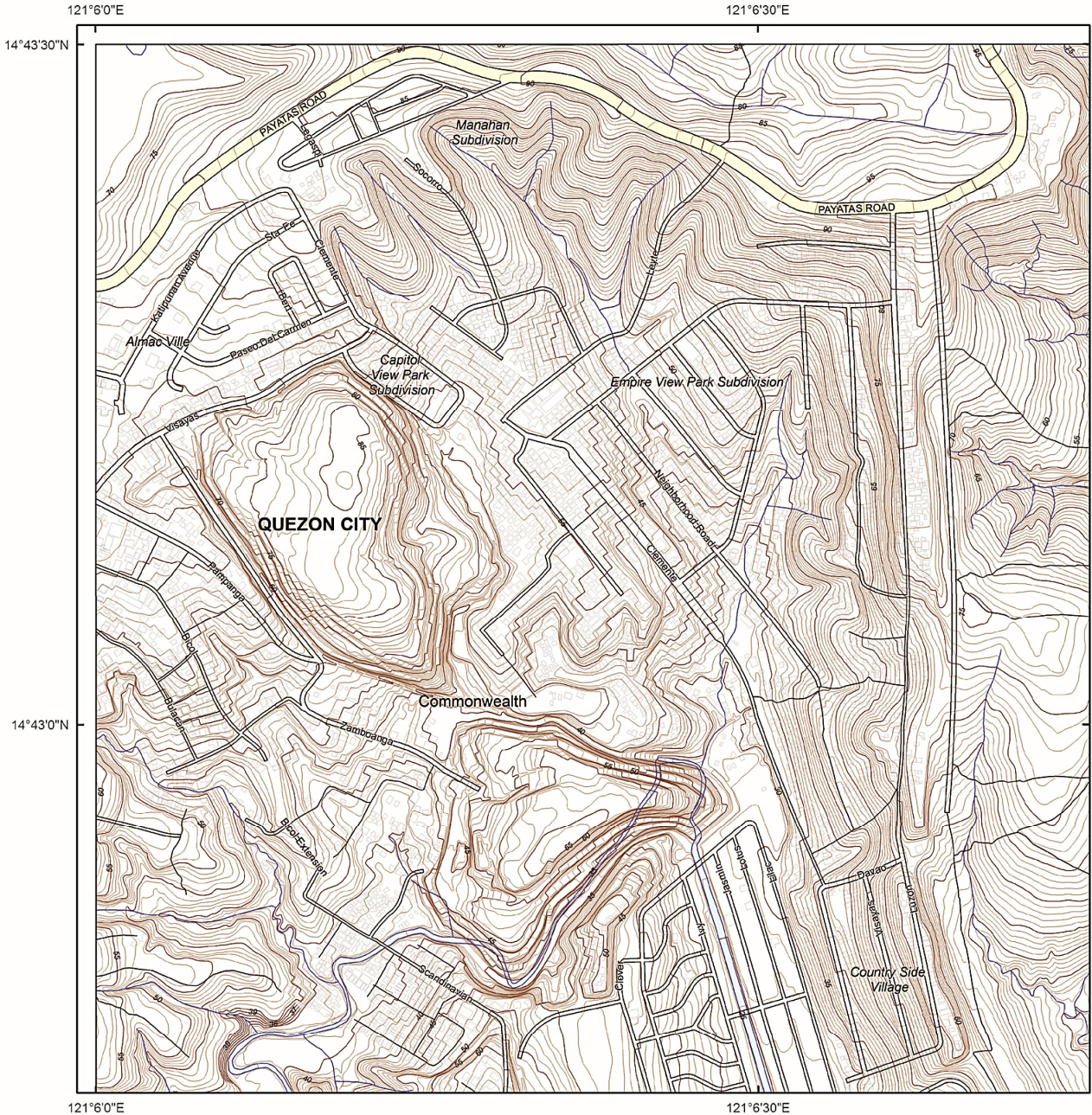


Spheroid..... Clarke 1866
 Projection..... Transverse Mercator
 Horizontal Datum..... Philippine Reference System 1992 (PRS92)
 Vertical Datum..... Mean Sea Level
 Contour Interval..... 1 meter



Department of Science and Technology
PHILIPPINE INSTITUTE OF VOLCANOLOGY AND SEISMOLOGY
 PHIVOLCS Building, C.P. Garcia Avenue
 U.P. Campus, Diliman, Quezon City
 Tel. No. : +63 2 426-1468 to 79 Telefax: +63 2 929-8366
 June 2014

West Valley Fault



Active Faults

- — — Solid line - trace is certain; hachures indicate downthrown area
- - - Dashed line - trace is approximate
- · · Dotted line - trace is concealed

Explanation

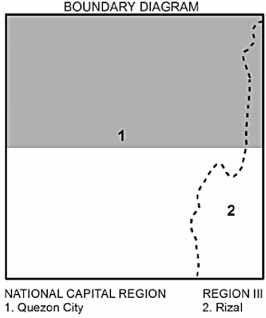
The Valley Fault System, consisting of the West Valley Fault and the East Valley Fault, was mapped by the Philippine Institute of Volcanology and Seismology using available data, such as aerial photographs, satellite imageries, topographic maps, earthquake epicenters and previous publications, and verified by field surveys. Some geomorphic features identified from aerial photographs may not be observable on the ground at present due to land modification. The recommended minimum buffer zone, or zone of avoidance, against ground rupture hazard is at least 5 meters as reckoned from both sides of the fault trace or from the edge of the deformation zone.

Base map are National Mapping and Resource Information Authority 1:5,000 planimetric maps (2004) and Metro Manila Street Map (2010).

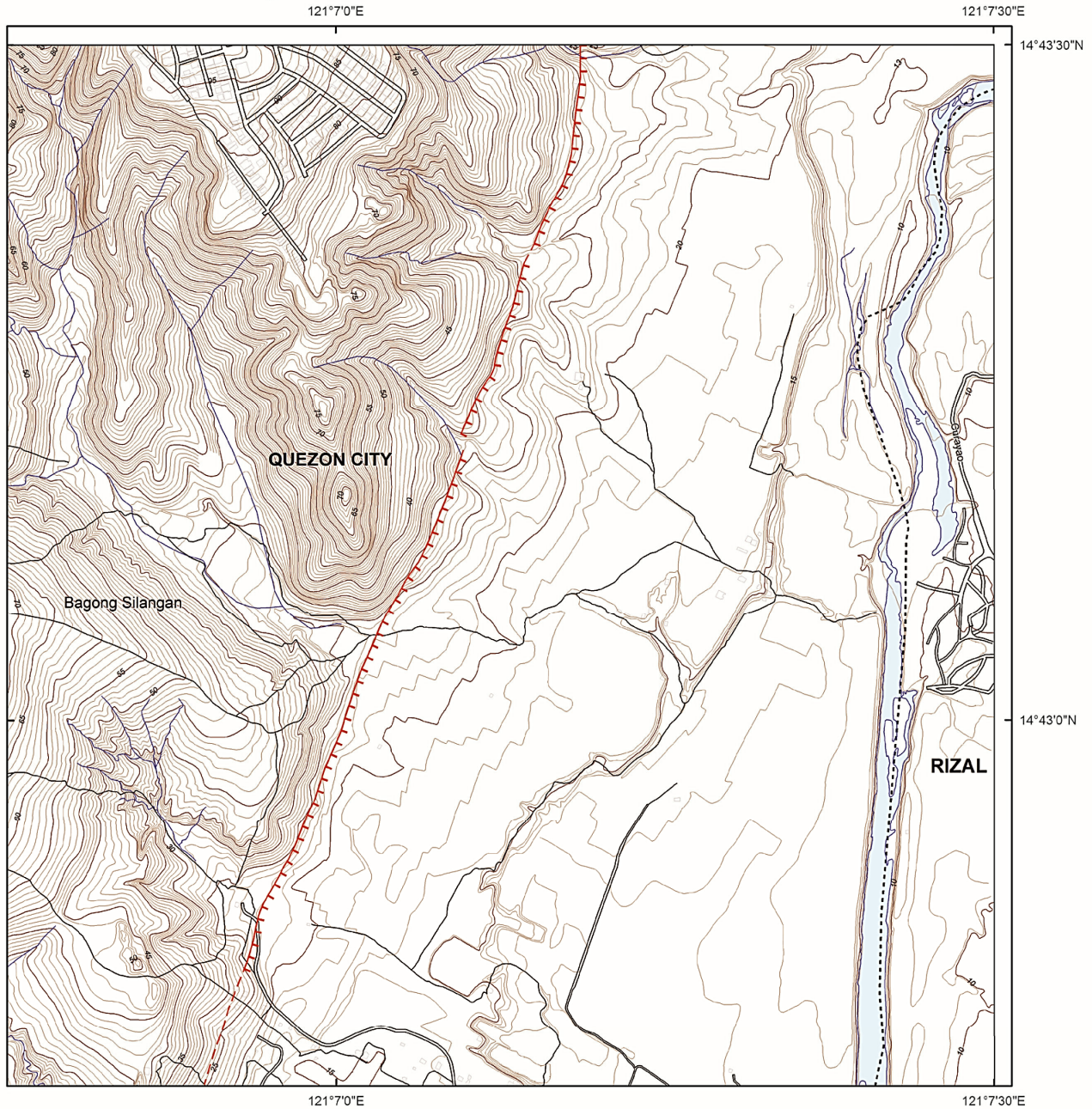
Legend

- Roads
- Contour lines
- - - Administrative boundaries
- Building footprints
- ▭ Major roads
- ▭ Water bodies

Disclaimer:
Administrative boundaries are approximate
(Risk Analysis Project, 2013).



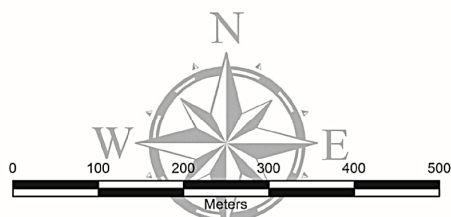
in Quezon City



INDEX TO ADJOINING SHEETS

3230 III 2 D	3230 III 3 A	3230 III 3 D
3230 III 2 C	3230 III 3 B	3230 III 3 C
3230 III 7 D	3230 III 8 A	

Shaded portion pertains to areas covered by the maps shown in these pages

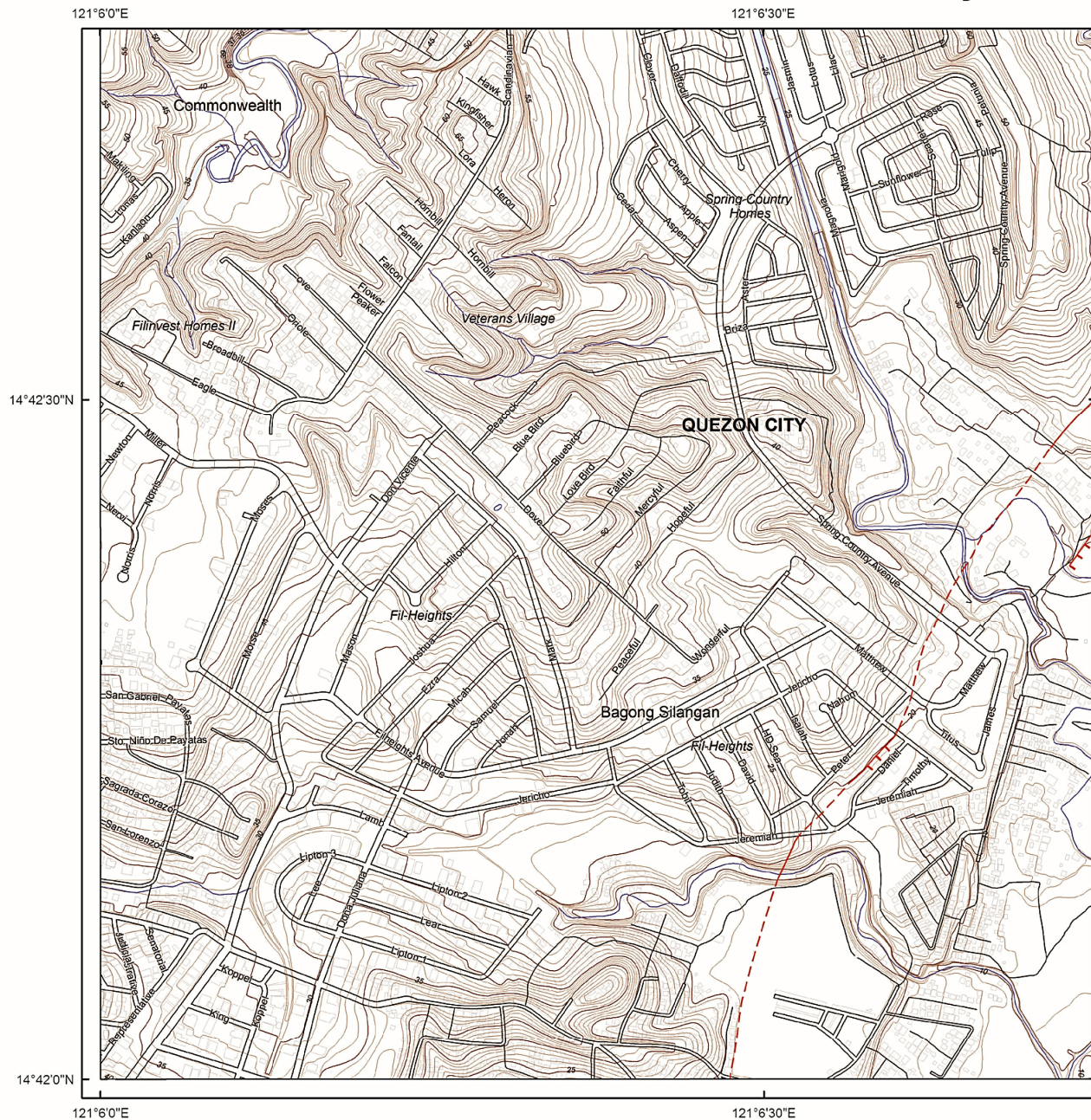


Spheroid..... Clarke 1866
 Projection..... Transverse Mercator
 Horizontal Datum..... Philippine Reference System 1992 (PRS92)
 Vertical Datum..... Mean Sea Level
 Contour Interval..... 1 meter



Department of Science and Technology
PHILIPPINE INSTITUTE OF VOLCANOLOGY AND SEISMOLOGY
 PHIVOLCS Building, C.P. Garcia Avenue
 U.P. Campus, Diliman, Quezon City
 Tel. No. : +63 2 426-1468 to 79 Telefax: +63 2 929-8366
 June 2014

West Valley Fault



Active Faults

- Solid line - trace is certain; hachures indicate downthrown area
- - - Dashed line - trace is approximate
- · · Dotted line - trace is concealed

Explanation

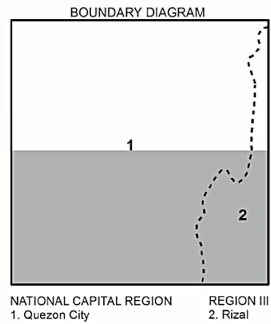
The Valley Fault System, consisting of the West Valley Fault and the East Valley Fault, was mapped by the Philippine Institute of Volcanology and Seismology using available data, such as aerial photographs, satellite imageries, topographic maps, earthquake epicenters and previous publications, and verified by field surveys. Some geomorphic features identified from aerial photographs may not be observable on the ground at present due to land modification. The recommended minimum buffer zone, or zone of avoidance, against ground rupture hazard is at least 5 meters as reckoned from both sides of the fault trace or from the edge of the deformation zone.

Base map are National Mapping and Resource Information Authority 1:5,000 planimetric maps (2004) and Metro Manila Street Map (2010).

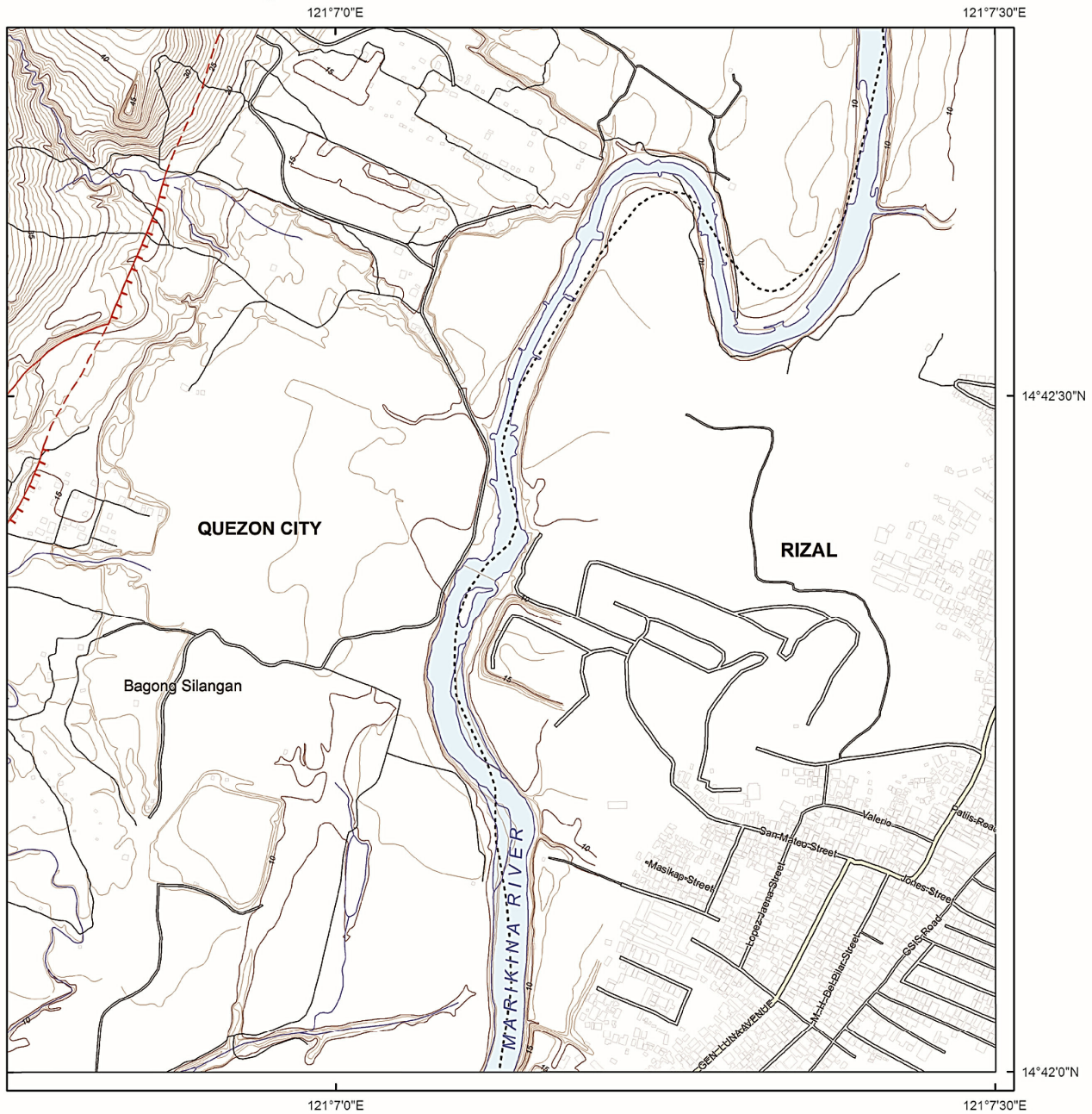
Legend

- Roads
- Contour lines
- Administrative boundaries
- Building footprints
- Major roads
- Water bodies

Disclaimer:
Administrative boundaries are approximate
(Risk Analysis Project, 2013).



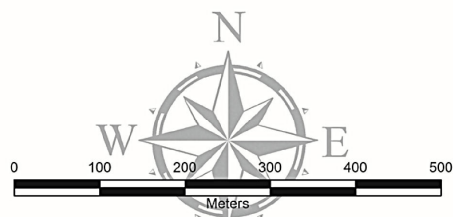
in Quezon City



INDEX TO ADJOINING SHEETS

3230 III 2 D	3230 III 3 A	3230 III 3 D
3230 III 2 C	3230 III 3 B	3230 III 3 C
3230 III 7 D	3230 III 8 A	

Shaded portion pertains to areas covered by the maps shown in these pages

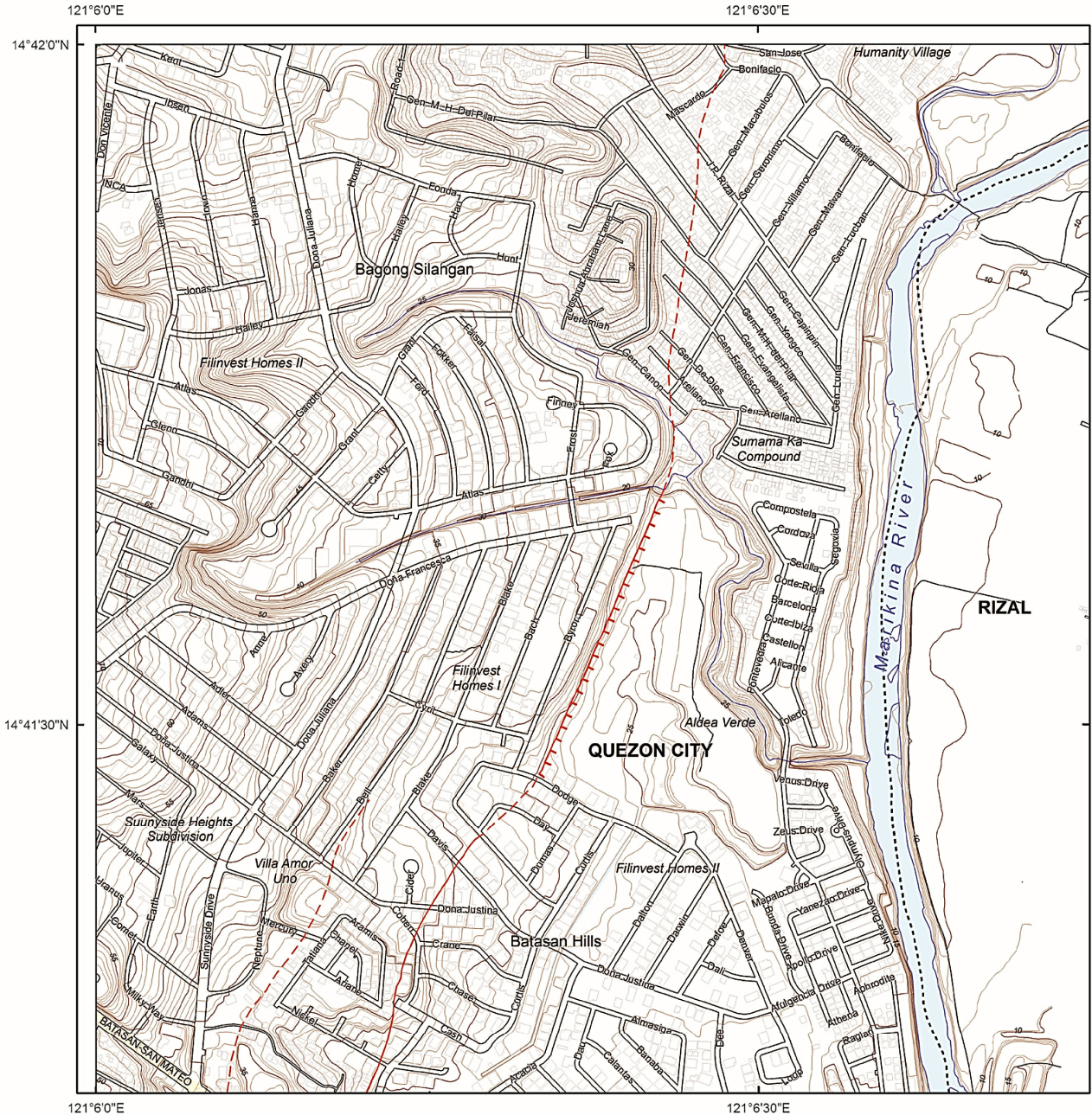


Spheroid..... Clarke 1866
 Projection..... Transverse Mercator
 Horizontal Datum..... Philippine Reference System 1992 (PRS92)
 Vertical Datum..... Mean Sea Level
 Contour Interval..... 1 meter



DOST
 Department of Science and Technology
PHILIPPINE INSTITUTE OF VOLCANOLOGY AND SEISMOLOGY
 PHIVOLCS Building, C.P. Garcia Avenue
 U.P. Campus, Diliman, Quezon City
 Tel. No. : +63 2 426-1468 to 79 Telefax: +63 2 929-8366
 June 2014

West Valley Fault



Active Faults

- Solid line - trace is certain; hachures indicate downthrown area
- - - Dashed line - trace is approximate
- · · Dotted line - trace is concealed

Explanation

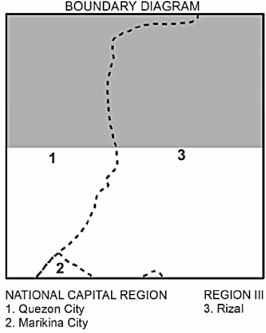
The Valley Fault System, consisting of the West Valley Fault and the East Valley Fault, was mapped by the Philippine Institute of Volcanology and Seismology using available data, such as aerial photographs, satellite imageries, topographic maps, earthquake epicenters and previous publications, and verified by field surveys. Some geomorphic features identified from aerial photographs may not be observable on the ground at present due to land modification. The recommended minimum buffer zone, or zone of avoidance, against ground rupture hazard is at least 5 meters as reckoned from both sides of the fault trace or from the edge of the deformation zone.

Base map are National Mapping and Resource Information Authority 1:5,000 planimetric maps (2004) and Metro Manila Street Map (2010).

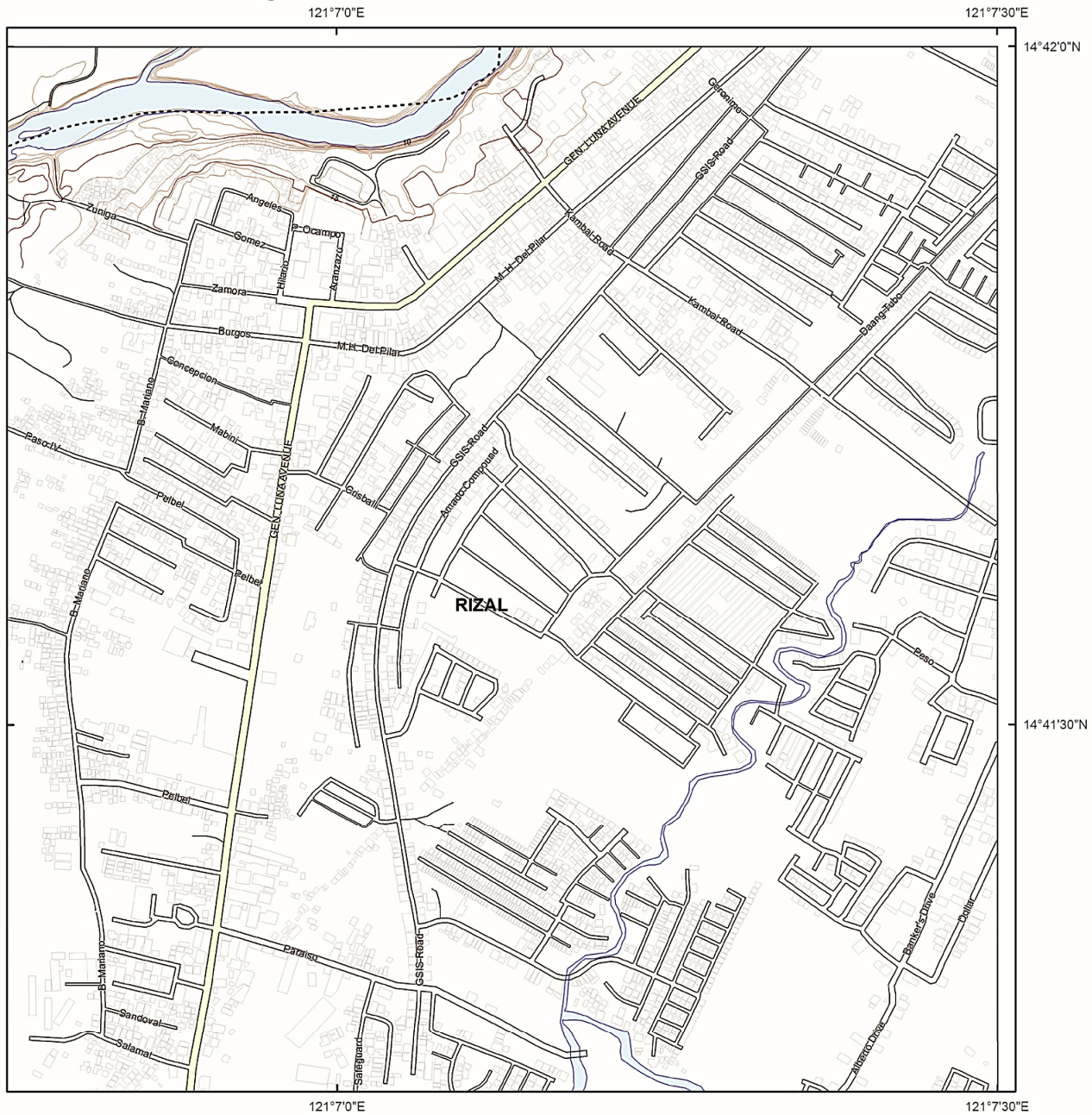
Legend

- Roads
- Contour lines
- - - Administrative boundaries
- Building footprints
- Major roads
- Water bodies

Disclaimer:
Administrative boundaries are approximate
(Risk Analysis Project, 2013).



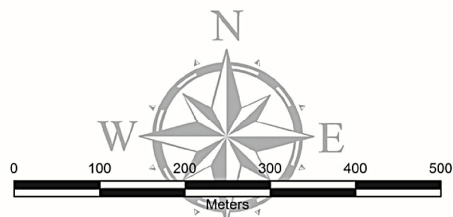
in Quezon City



INDEX TO ADJOINING SHEETS

3230 III 2 C	3230 III 3 B	3230 III 3 C
3230 III 7 D	3230 III 8 A	
3230 III 7 C	3230 III 8 B	3230 III 8 C

Shaded portion pertains to areas covered by the maps shown in these pages

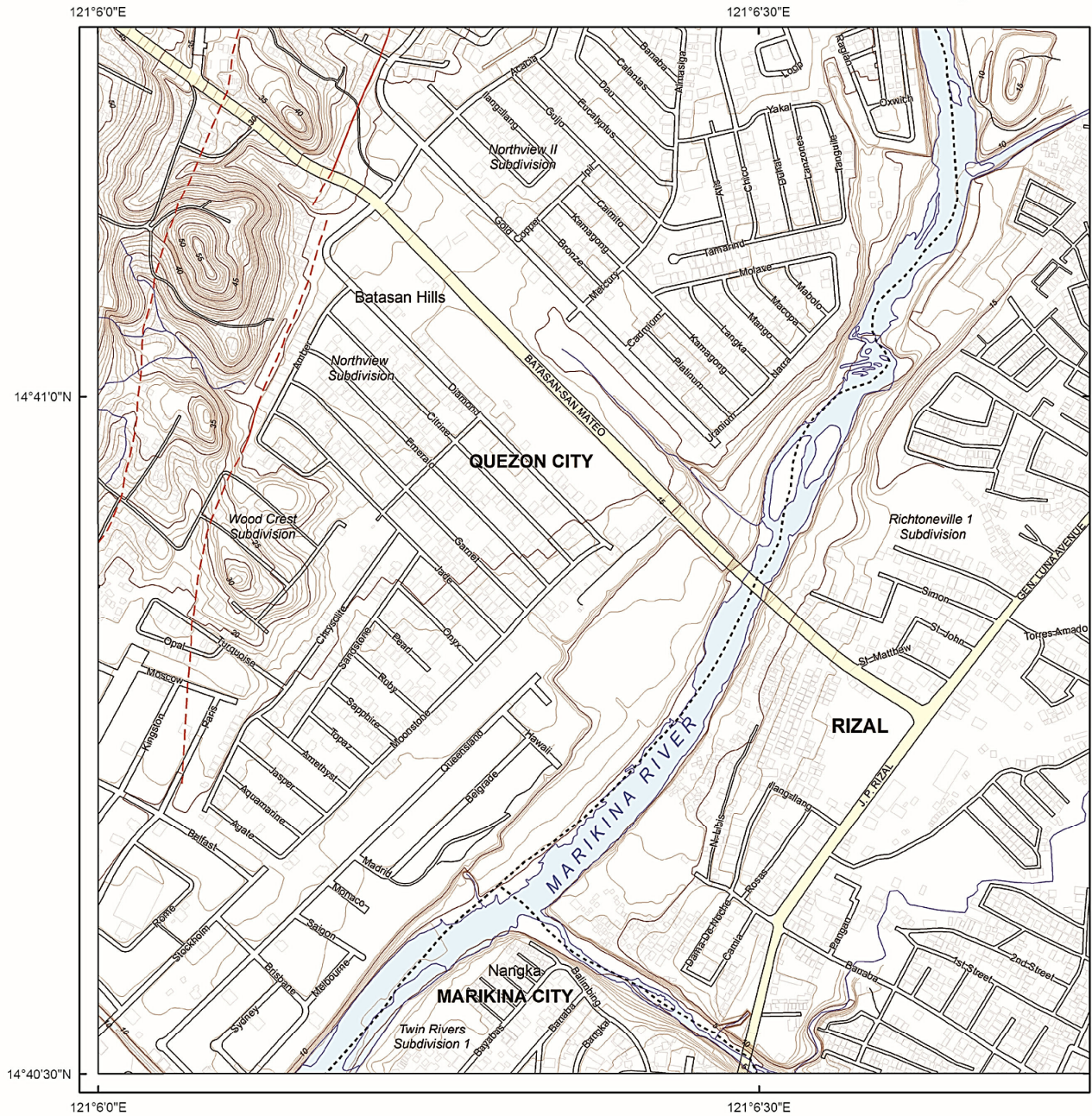


Spheroid..... Clarke 1866
 Projection..... Transverse Mercator
 Horizontal Datum..... Philippine Reference System 1992 (PRS92)
 Vertical Datum..... Mean Sea Level
 Contour Interval..... 1 meter



Department of Science and Technology
PHILIPPINE INSTITUTE OF VOLCANOLOGY AND SEISMOLOGY
 PHIVOLCS Building, C.P. Garcia Avenue
 U.P. Campus, Diliman, Quezon City
 Tel. No. : +63 2 426-1466 to 79 Telefax: +63 2 929-8366
 June 2014

West Valley Fault



Active Faults

- Solid line - trace is certain; hachures indicate downthrown area
- Dashed line - trace is approximate
- Dotted line - trace is concealed

Explanation

The Valley Fault System, consisting of the West Valley Fault and the East Valley Fault, was mapped by the Philippine Institute of Volcanology and Seismology using available data, such as aerial photographs, satellite imageries, topographic maps, earthquake epicenters and previous publications, and verified by field surveys. Some geomorphic features identified from aerial photographs may not be observable on the ground at present due to land modification. The recommended minimum buffer zone, or zone of avoidance, against ground rupture hazard is at least 5 meters as reckoned from both sides of the fault trace or from the edge of the deformation zone.

Base map are National Mapping and Resource Information Authority 1:5,000 planimetric maps (2004) and Metro Manila Street Map (2010).

Legend

- Roads
- Contour lines
- Administrative boundaries
- Building footprints
- Major roads
- Water bodies

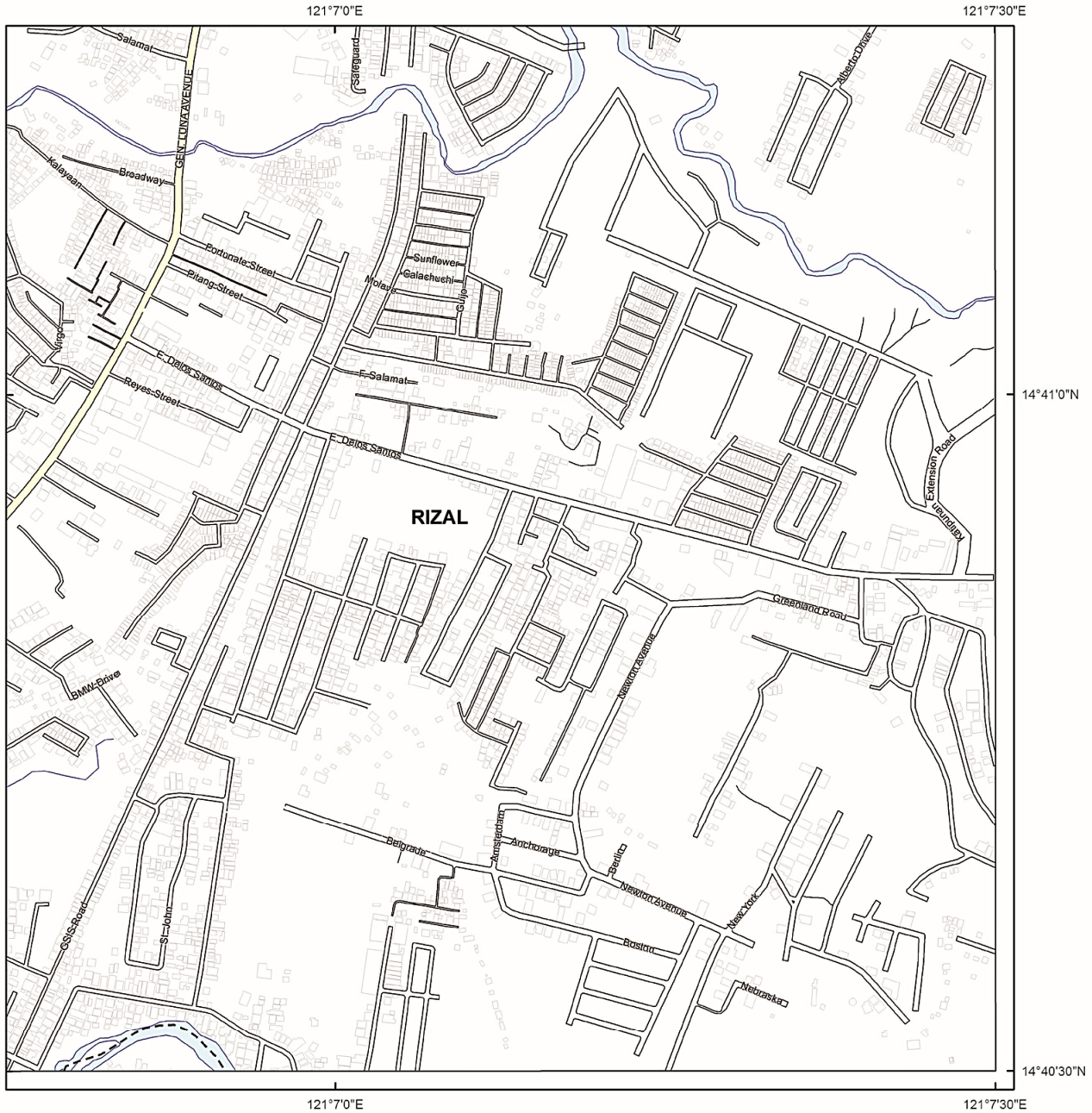
Disclaimer:
Administrative boundaries are approximate (Risk Analysis Project, 2013).

BOUNDARY DIAGRAM

NATIONAL CAPITAL REGION REGION III

1. Quezon City 2. Marikina City 3. Rizal

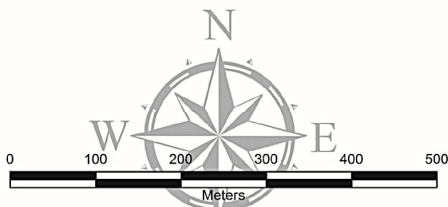
in Quezon City



INDEX TO ADJOINING SHEETS

3230 III 2 C	3230 III 3 B	3230 III 3 C
3230 III 7 D	3230 III 8 A	
3230 III 7 C	3230 III 8 B	3230 III 8 C

Shaded portion pertains to areas covered by the maps shown in these pages

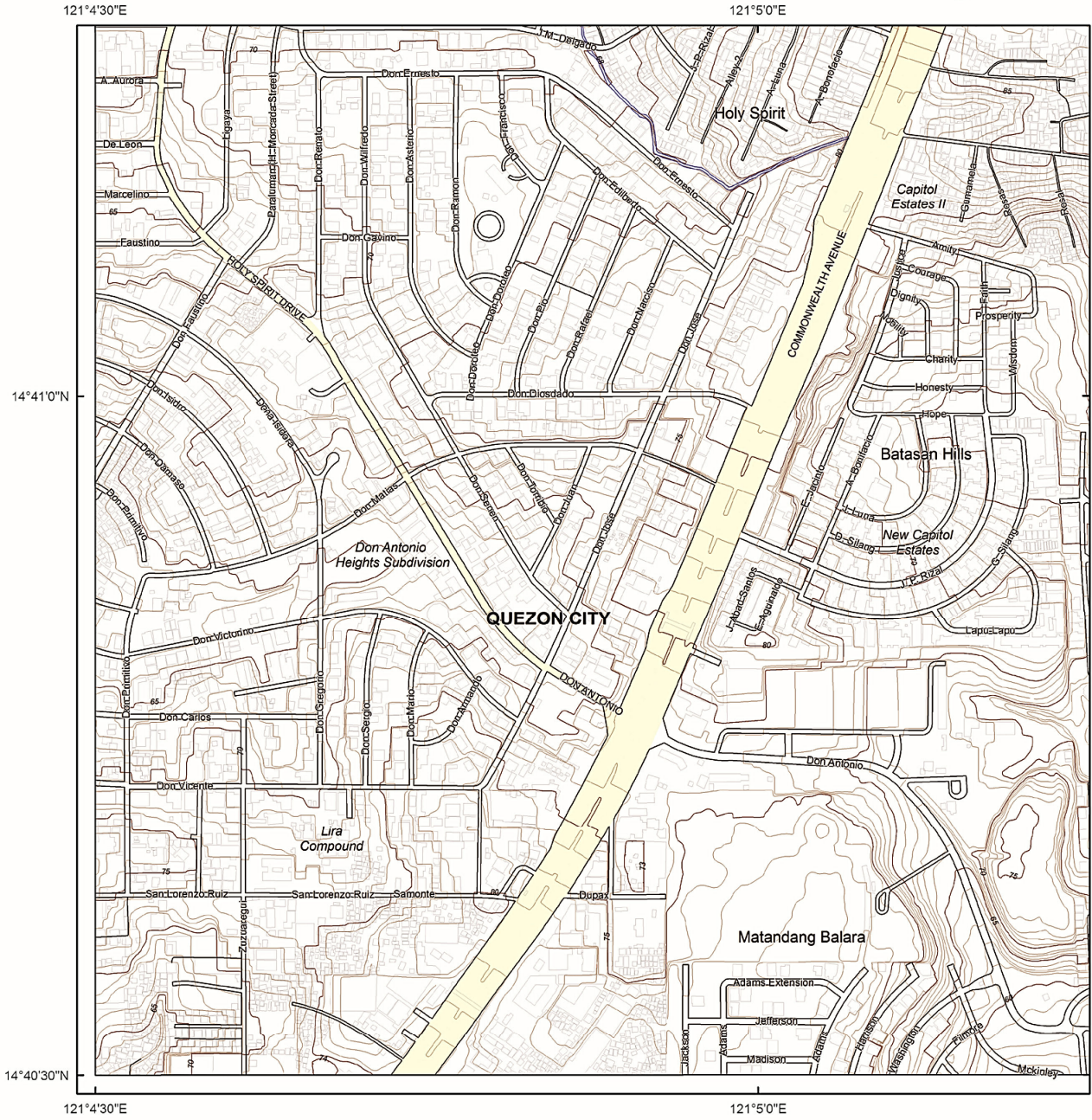


Spheroid..... Clarke 1866
 Projection..... Transverse Mercator
 Horizontal Datum..... Philippine Reference System 1992 (PRS92)
 Vertical Datum..... Mean Sea Level
 Contour Interval..... 1 meter



Department of Science and Technology
PHILIPPINE INSTITUTE OF VOLCANOLOGY AND SEISMOLOGY
 PHIVOLCS Building, C.P. Garcia Avenue
 U.P. Campus, Diliman, Quezon City
 Tel. No. : +63 2 426-1468 to 79 Telefax: +63 2 929-8366
 June 2014

West Valley Fault



Active Faults

- Solid line - trace is certain; hachures indicate downthrown area
- - - Dashed line - trace is approximate
- · · Dotted line - trace is concealed

Explanation

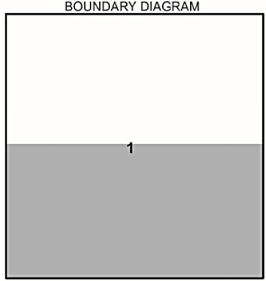
The Valley Fault System, consisting of the West Valley Fault and the East Valley Fault, was mapped by the Philippine Institute of Volcanology and Seismology using available data, such as aerial photographs, satellite imageries, topographic maps, earthquake epicenters and previous publications, and verified by field surveys. Some geomorphic features identified from aerial photographs may not be observable on the ground at present due to land modification. The recommended minimum buffer zone, or zone of avoidance, against ground rupture hazard is at least 5 meters as reckoned from both sides of the fault trace or from the edge of the deformation zone.

Base map are National Mapping and Resource Information Authority 1:5,000 planimetric maps (2004) and Metro Manila Street Map (2010).

Legend

- Roads
- Contour lines
- Administrative boundaries
- Building footprints
- Major roads
- Water bodies

Disclaimer:
Administrative boundaries are approximate
(Risk Analysis Project, 2013).



City / Municipality
1. Quezon City

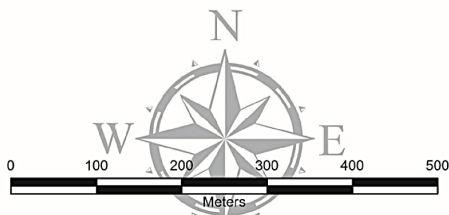
in Quezon City



INDEX TO ADJOINING SHEETS

3230 III 2 B	3230 III 2 C	3230 III 3 B
3230 III 7 A	3230 III 7 D	3230 III 8 A
3230 III 7 B	3230 III 7 C	3230 III 8 B

Shaded portion pertains to areas covered by the maps shown in these pages

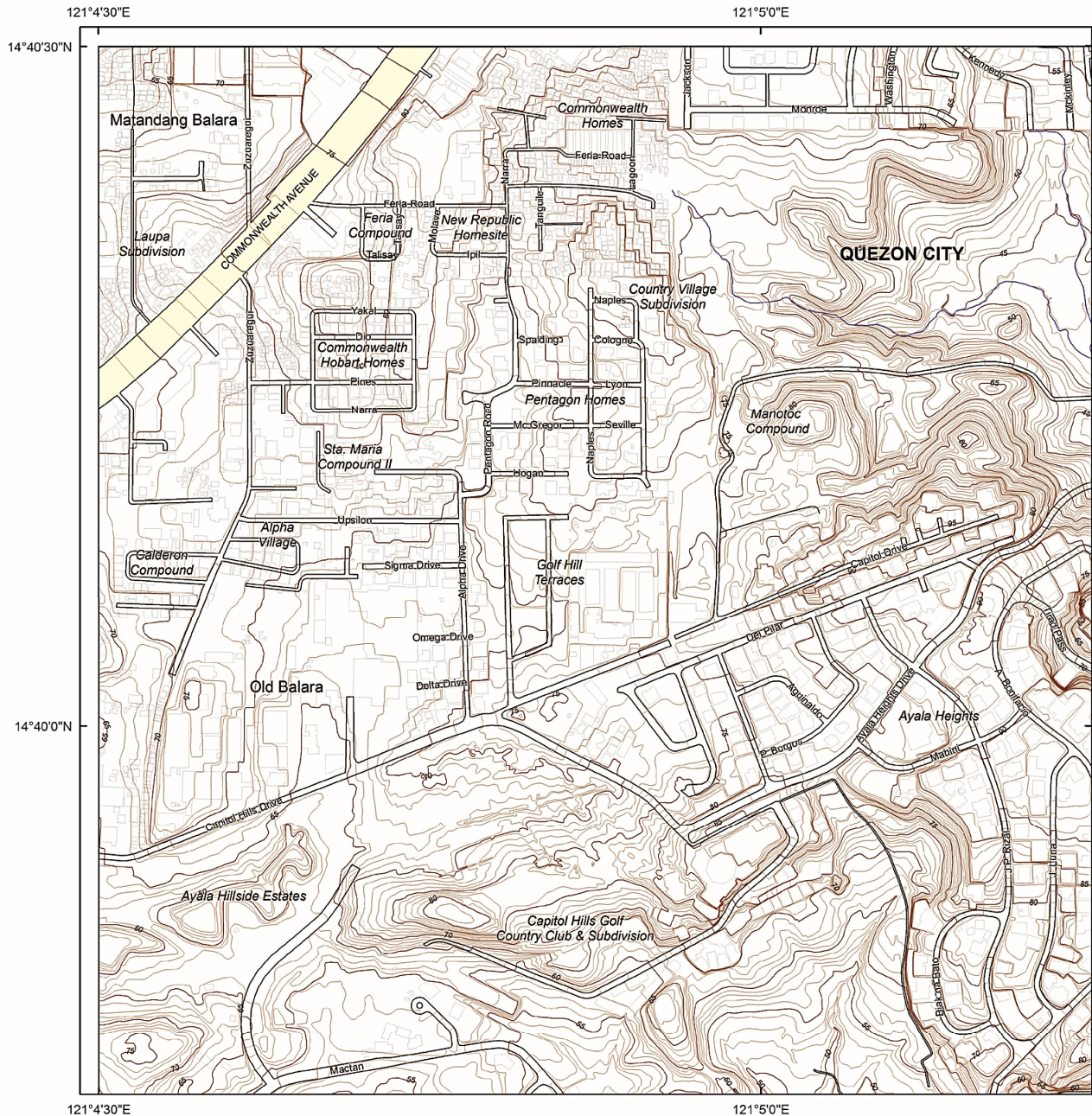


Spheroid..... Clarke 1866
 Projection..... Transverse Mercator
 Horizontal Datum..... Philippine Reference System 1992 (PRS92)
 Vertical Datum..... Mean Sea Level
 Contour Interval..... 1 meter



Department of Science and Technology
PHILIPPINE INSTITUTE OF VOLCANOLOGY AND SEISMOLOGY
 PHIVOLCS Building, C.P. Garcia Avenue
 U.P. Campus, Diliman, Quezon City
 Tel. No. : +63 2 426-1468 to 79 Telefax: +63 2 929-8366
 June 2014

West Valley Fault in



Active Faults

- Solid line - trace is certain; hachures indicate downthrown area
- Dashed line - trace is approximate
- Dotted line - trace is concealed

Explanation

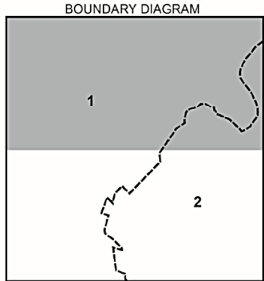
The Valley Fault System, consisting of the West Valley Fault and the East Valley Fault, was mapped by the Philippine Institute of Volcanology and Seismology using available data, such as aerial photographs, satellite imageries, topographic maps, earthquake epicenters and previous publications, and verified by field surveys. Some geomorphic features identified from aerial photographs may not be observable on the ground at present due to land modification. The recommended minimum buffer zone, or zone of avoidance, against ground rupture hazard is at least 5 meters as reckoned from both sides of the fault trace or from the edge of the deformation zone.

Base map are National Mapping and Resource Information Authority 1:5,000 planimetric maps (2004) and Metro Manila Street Map (2010).

Legend

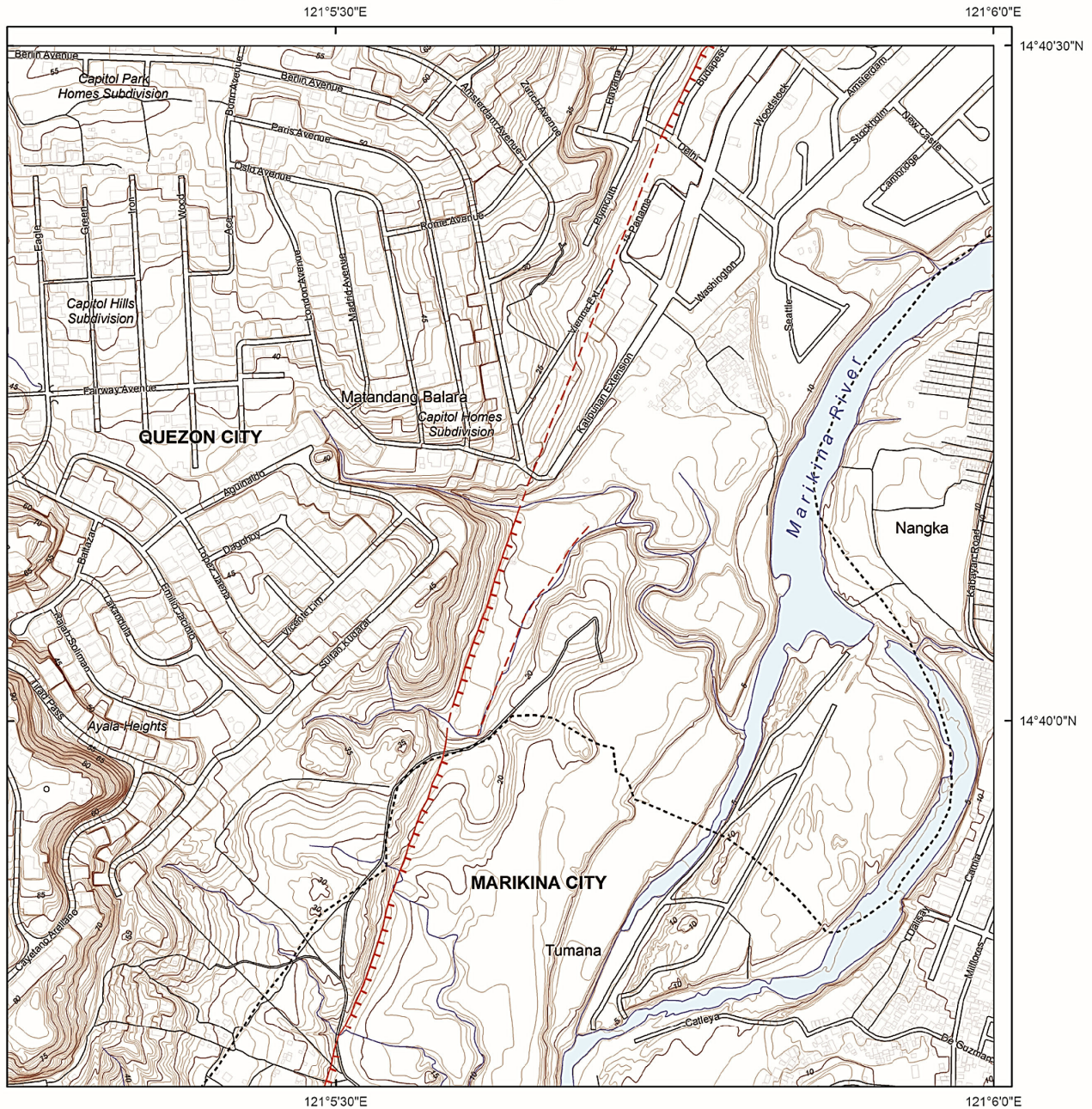
- Roads
- Contour lines
- Administrative boundaries
- Building footprints
- Major roads
- Water bodies

Disclaimer:
Administrative boundaries are approximate
(Risk Analysis Project, 2013).



City / Municipality
1. Quezon City
2. Markina City

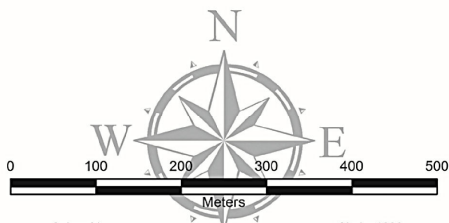
Marikina City and Quezon City



INDEX TO ADJOINING SHEETS

3230 III 7 A	3230 III 7 D	3230 III 8 A
3230 III 7 B	3230 III 7 C	3230 III 8 B
3230 III 12 A	3230 III 12 D	3230 III 13 A

Shaded portion pertains to areas covered by the maps shown in these pages

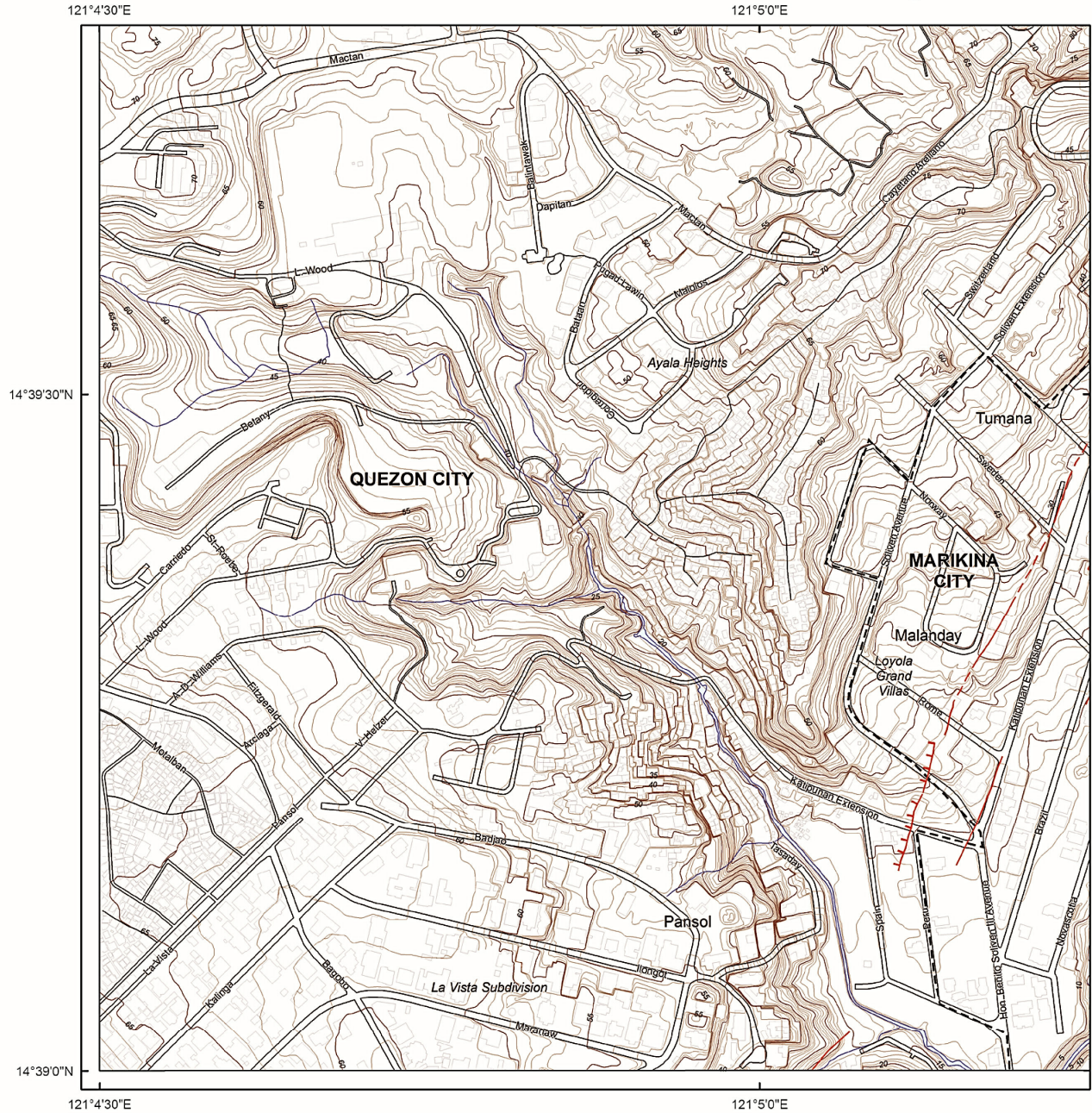


Spheroid..... Clarke 1886
 Projection..... Transverse Mercator
 Horizontal Datum..... Philippine Reference System 1992 (PRS92)
 Vertical Datum..... Mean Sea Level
 Contour Interval..... 1 meter



Department of Science and Technology
PHILIPPINE INSTITUTE OF VOLCANOLOGY AND SEISMOLOGY
 PHIVOLCS Building, C.P. Garcia Avenue
 U.P. Campus, Diliman, Quezon City
 Tel. No. : +63 2 426-1468 to 79 Telefax: +63 2 929-8366
 June 2014

West Valley Fault in



Active Faults

- Solid line - trace is certain; hachures indicate downthrown area
- - - Dashed line - trace is approximate
- · · Dotted line - trace is concealed

Explanation

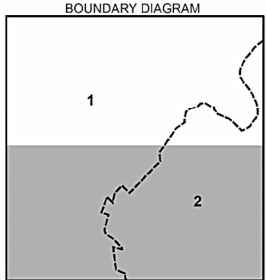
The Valley Fault System, consisting of the West Valley Fault and the East Valley Fault, was mapped by the Philippine Institute of Volcanology and Seismology using available data, such as aerial photographs, satellite imageries, topographic maps, earthquake epicenters and previous publications, and verified by field surveys. Some geomorphic features identified from aerial photographs may not be observable on the ground at present due to land modification. The recommended minimum buffer zone, or zone of avoidance, against ground rupture hazard is at least 5 meters as reckoned from both sides of the fault trace or from the edge of the deformation zone.

Base map are National Mapping and Resource Information Authority 1:5,000 planimetric maps (2004) and Metro Manila Street Map (2010).

Legend

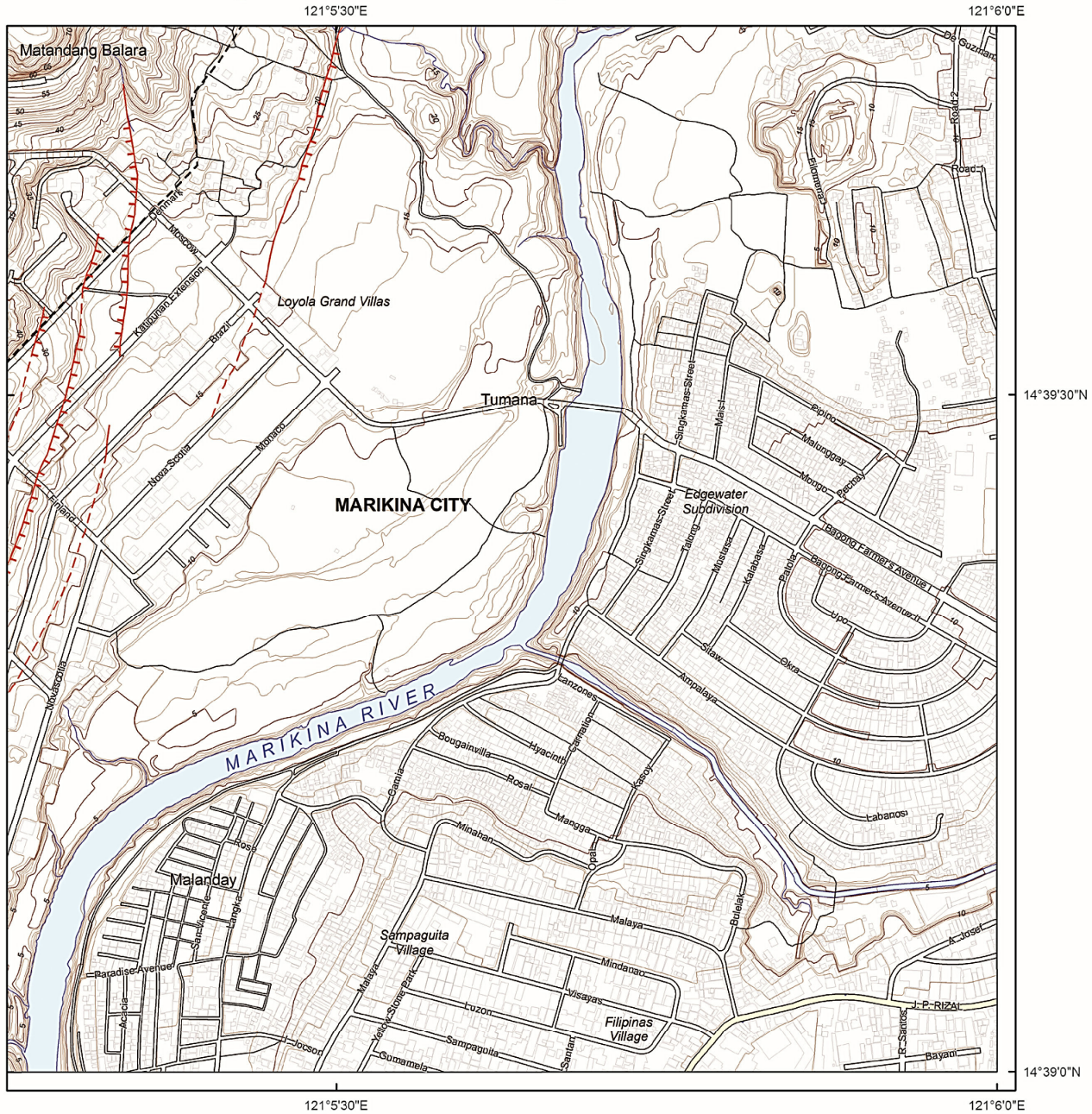
- Roads
- Contour lines
- - - Administrative boundaries
- Building footprints
- Major roads
- Water bodies

Disclaimer:
Administrative boundaries are approximate
(Risk Analysis Project, 2013).



City / Municipality
1. Quezon City
2. Marikina City

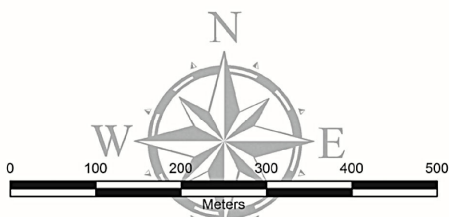
Marikina City and Quezon City



INDEX TO ADJOINING SHEETS

3230 III 7 A	3230 III 7 D	3230 III 8 A
3230 III 7 B	3230 III 7 C	3230 III 8 B
3230 III 12 A	3230 III 12 D	3230 III 13 A

Shaded portion pertains to areas covered by the maps shown in these pages



Spheroid..... Clarke 1866
 Projection..... Transverse Mercator
 Horizontal Datum..... Philippine Reference System 1992 (PRS92)
 Vertical Datum..... Mean Sea Level
 Contour Interval..... 1 meter



Department of Science and Technology
PHILIPPINE INSTITUTE OF VOLCANOLOGY AND SEISMOLOGY
 PHIVOLCS Building, C.P. Garcia Avenue
 U.P. Campus, Diliman, Quezon City
 Tel. No. : +63 2 426-1468 to 79 Telefax: +63 2 929-8366
 June 2014